



*Exploring the*

# ARBORETUM

MAGAZINE FOR THE MEMBERS OF THE LOS ANGELES COUNTY ARBORETUM AND BOTANIC GARDEN

SUMMER/FALL 2013

## LAST STAND

*Going out with a big bang*

## ORCHIDS

*Meet their caretaker*

## FEAST

*A farm-to-table fundraiser  
at Baldwin Ranch*





A NEW ERA BEGINS

As president of the Los Angeles Arboretum Foundation board, I am delighted to announce important new progress in our services to the public; but first, a little history.

Since our founding in 1948, the Arboretum has operated through a public-private partnership between the County of Los Angeles and the Los Angeles Arboretum Foundation. Indeed, it was

this collaboration that made our Arboretum possible, with the newly formed Foundation actively running this great institution in its very early years. Since then, the Foundation has focused primarily on education and garden improvements, while the County, through its Parks and Recreation Department, has carried responsibility for collections, grounds and facilities, and most day-to-day operations.

This long-standing partnership enters a new phase beginning July 1, 2013. On that date a new operating agreement between the County and the Foundation will take effect. The agreement will give the Foundation more hands-on management of the Arboretum, particularly in the area of visitor services. The County Board of Supervisors approved the agreement on May 21.

Our highly regarded CEO Richard Schulhof works for both the County and the Foundation. And there are employees of both the County and the Foundation on

staff. In this respect, operations will remain unchanged. But the new agreement will place admissions under the Foundation, giving us the flexibility to more fully welcome visitors and provide additional services to enrich their experience, thus accomplishing a key goal of our strategic plan (visit [www.arboretum.org](http://www.arboretum.org)).

Most importantly, we have begun to investigate the possibility of constructing a new entrance so that visitors immediately enjoy majestic views of our landscape and the San Gabriel Mountains. Currently, entry through the rotunda directs visitors onto a narrow path that crosses a service road. As originally planned and built, the Arboretum entrance was located near the Gift Shop and led visitors to glorious vistas against the backdrop of the San Gabriel Mountains. Our plan is to regain that original entrance experience and showcase the breathtaking views right from the start of a visit.

The Arboretum Foundation has begun conceptual design studies for the new entrance, working with the architectural firm of RACAIA in association with Tim Shea (Tim worked on the design of the Getty Museum for Richard Meier & Partners). I can say these design concepts are very exciting, and as they develop, we look forward to sharing them with you. We will welcome your input and, as always, express our deep appreciation for your on-going support.

—Kenneth D. Hill, Ph.D.

THE LOS ANGELES ARBORETUM FOUNDATION

*Founded in 1948, the Foundation has provided new gardens, extensive education programs, and publications serving Southern California. Today, the Foundation leads a broad community of members, volunteers and donors in establishing the support needed to realize the Arboretum's potential as a premier public garden and educational resource.*

2013 BOARD OF TRUSTEES

Kenneth D. Hill, Ph.D. President	George A. Brumder Honorary Trustee	Nancy M. McDonald Philip Miller
Janice A. Sharp, Ph.D. Vice President	Renate Cohen Joseph S. Eisele	G. Arnold Mulder, M.D. Honorary Trustee
Shelley D. Harter Secretary	Danford Foliart	Donivee T. Nash
Kristin Creighton Treasurer	Burks L. Hamner Honorary Trustee	Gilbert N. Resendez Honorary Trustee
George Ball	H. Clay Kellogg	Timothy Shea
James I. Bang (II Young Bang)	Susan Kranwinkle	Gary Thomas
	Mark Ledbetter	
	Virginia Lincoln	

General Information .....	626-821-3222	Peacock Café .....	626-446-2248
Membership .....	626-821-3233	Site Rentals .....	626-821-3204
Development .....	626-821-3237	Group Tours .....	626-821-3204
Arboretum Library .....	626-821-3213	Class Registration .....	626-821-4623
Plant Information Hotline .....	626-821-3239	Weddings .....	626-821-3211
Garden & Gift Shop .....	626-447-8751	Wedding Photography .....	626-821-3244

Exploring the  
ARBORETUM

MAGAZINE FOR THE MEMBERS OF THE LOS ANGELES COUNTY ARBORETUM AND BOTANIC GARDEN



4 NEWS & HIGHLIGHTS  
Happenings at the garden.

6 THE FEAST AT  
BALDWIN RANCH  
Top local chefs cook up a  
splendid fundraiser.

7 GARDENING FOR  
EXERCISE  
Forget the weights, pick up a  
shovel to get in shape.

8 SANTA ANITA DEPOT  
Preserving the station.



PAGE 10

ORCHID LADY

Julie Norman shares her observations and tips from her years of experience caring for the Arboretum's vast collection of orchids.

Photo of children by Dolly Paul; orchids by Frank McDonough



PAGE 14

KIDS & FAMILY

The Arboretum is a place of nature, wonder and discovery for any age.

12 ONCE IN A LIFETIME  
Celebrating a botanical  
grand finale.

15 JULY - DECEMBER  
CALENDAR

21 DONORS

This is a publication of the Los Angeles Arboretum Foundation. The Los Angeles County Arboretum and Botanic Garden is governed through a private-public collaboration between the Foundation and the County of Los Angeles through its Parks and Recreation Department.

On the cover: *Furcraea macdougallii*, MacDougall's century plant. Photo by Donald R. Hodel.  
On the back, *Salvia spathacea*, hummingbird sage. Photo by Debe Loxton.





## WELLS FARGO: OUR PARTNER IN PUBLIC EDUCATION

Visit the Arboretum on any day during the school year and you'll see scores of students exploring the wonders of nature, as well as important chapters in California history. As evidenced by 16,000 annual student visits, the Arboretum's 127-acre landscape, botanical collections, and historical resources are unparalleled resources for public education. We thank Wells Fargo for ensuring that Arboretum field trips are available to increasing numbers of school children from across Los Angeles County. For many classrooms, particularly those from larger urban districts, securing funds for transportation is often the greatest obstacle to making a visit. Through its funding of bus transportation,

Wells Fargo has enabled thousands of students to experience the Arboretum, including many from the Los Angeles and Pasadena unified school districts. In addition, this year over 800 middle and high school students were able to attend the L.A. Environmental Education Fair, again thanks to Wells Fargo transportation funding. Finally, the family education activities of the recent Wild West Days event were supported through the same generous support. We express our deep appreciation to Wells Fargo for a partnership that has done so much to make the Arboretum a cherished resource for children's discovery and learning. 🌱

Photo of chicks by Dolly Paul.

## CHICKS ALL GROWN UP

The newest additions to the Garden for All Seasons are five beautiful hens happily frolicking around or napping together in sunny corners of their spacious new coop. They arrived as chicks in February and have grown into lovely gals. Each is a distinctive color and variety: Bella, a Brahma, is white with black feathers and a pretty black feather boa around her neck. Belinda, a Plymouth Barred Rock, has black with white feathers that create a beautiful speckled appearance. Betsy Ross is an Araucana chicken that will lay blue and green eggs. Buffy, a Buff Orpington, is the most social hen and loves to jump up on laps and be petted. Big Babs, a Rhode Island Red, was our first hen to lay eggs! The goal of the Garden for All Seasons is to demonstrate sustainable approaches to home food production, according to Jill Morganelli, the Arboretum's horticultural supervisor. The garden is designed to teach how to organically grow fruits and vegetables, care for backyard chickens, and maintain compost. The hens and garden are expertly tended by Tom Moure, right, and a staff of extraordinary volunteers—and we currently have volunteer openings for anyone who would like to participate. 🌱



## SIBY AND PERRY MINTON: NEARLY 40 YEARS OF SERVICE!

Arboretum staff and depot and preservation committee volunteers recently gathered to celebrate the exemplary work of Siby and Perry Minton. Since 1975, they have filled many important roles at the Arboretum, most recently as docents at the Santa Anita Depot. Thanks and congratulations to a fabulous couple who love the Arboretum as well as serving the community. 🌱



## FORCES OF NATURE WINS NATIONAL AWARD

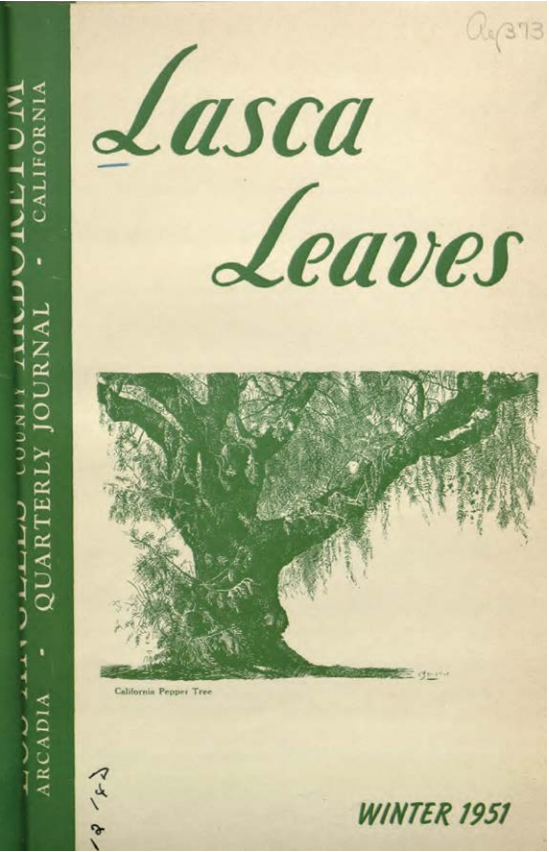
The Forces of Nature exhibition last December featuring art created from fallen trees was awarded a 2013 Achievement Award in the category of Arts and Historic Preservation by the National Association of Counties. In announcing the award to Los Angeles County, the association said, "Due to its exceptional results and unique innovations, your program has been chosen to receive the honor of Best of Category." The association, founded in 1935, is the only national organization that represents 3,069 county governments in the United States. The three-day Forces of Nature exhibition, curated by Leigh Adams, was a tribute to trees lost in the 2011 windstorm that ravaged the Arboretum. The wood from toppled trees was distributed to more than 100 artists, who brought together a range of artistic vision as diverse as the trees from which the wood came. Their art was sold to raise funds for the next generation of Arboretum trees. 🌱

## ARBORETUM RECEIVES ACCREDITATION

Having achieved standards of professional practices deemed important for arboreta and botanic gardens worldwide, the Los Angeles County Arboretum and Botanic Garden is now recognized as an accredited arboretum in the Morton Register of Arboreta. The Morton Register is a comprehensive list and database of arboreta and other public gardens that collect and display trees, shrubs, and other woody plants for the benefit of the public, science, and conservation. Accreditation is based on degrees of development, capacity, and professionalism. The Los Angeles County Arboretum was awarded the highest standard achievable by the ArbNet Arboretum Accreditation Program. The program is an international initiative sponsored and coordinated by The Morton Arboretum in cooperation with the American Public Gardens Association and Botanic Gardens Conservation International. 🌱

## THE GOOD FAMILY FOUNDATION FUNDS PROJECT TO DIGITIZE ARBORETUM PUBLICATIONS

Thanks to the generosity of the Good Family Foundation, the Arboretum's legacy in writing will be preserved digitally and made available in the on-line archive of the Biodiversity Heritage Library and at the Arboretum's website. The Arboretum's newsletters, journals and annual reports contain a wealth of information about Southern California horticulture, plant information, garden history and other topics. The oldest publications date back to 1950 and include our journal *LASCA Leaves*, which was an outstanding publication that chronicled horticulture in the region. The total scanning project, funded by a \$20,000 grant from the Good Family Foundation, will contain twenty-five titles encompassing 1950 to this current magazine you are reading and beyond, according to Susan C. Eubank, Arboretum librarian. In order for this project to have the broadest impact, the Arboretum Library is collaborating with the Biodiversity Heritage Library ([www.biodiversityheritage.org](http://www.biodiversityheritage.org)). This organization is made up of libraries that are digitizing significant natural history and botanical works so that they become readily accessible to anyone with access to an Internet connection. BHL was created initially to help with scientific research throughout the world; however, the materials are used for all kinds of purposes by all kinds of people. The oldest works in BHL are 200 years old. The Arboretum's materials are in a select group of entities that have granted copyright permission for scanning. For long-term preservation purposes the Arboretum scans also will be preserved in the Internet archive ([www.archive.org](http://www.archive.org)). Next year the funding will help us create an interface for the materials on the Arboretum website as well. To check out a test group of materials visit: <http://bit.ly/11WWK76>. 🌱



The journal provided an indepth view of the Arboretum and its influence on Southern California from 1950 to 1976 with its articles about local history, plant research and horticultural introductions.





## THE FEAST AT BALDWIN RANCH

Celebrate the first day of autumn with a sumptuous farm-to-table dining experience at the Arboretum. The first outdoors Feast at Baldwin Ranch will feature a unique and memorable meal, with each course of the menu prepared by a different chef from well-known local restaurants.

Led by Claud Beltran of The Eatery (seen above in green), featured chefs include (from left) Lalo Sanchez of the new Crossings restaurant; Gale Kohl of Gale's Restaurant; Tim Gultinan of The Raymond Restaurant; Alexandra Poer Sheridan of Alexandra's Table; and Jeffrey Haines, pastry chef at The Raymond Restaurant.

The Feast at Baldwin Ranch is a fundraising event made possible by the generosity of the chefs and their restaurants, as well as local purveyors of fine foods and wines. Proceeds will support a new youth educational initiative in the Garden for All Seasons that engages children in novel hands-on learning experiences to promote a love of gardening, develop an appreciation for the environment, and cultivate the mind.

### THE FEAST AT BALDWIN RANCH

Sunday, September 22; 5-8pm; Queen Anne Cottage Lawn  
\$200 per person; sponsorship and VIP options are available.  
Please contact Brittany Fabeck at 626-821-3237 for reservations. Seating is limited to the first 175 persons to make payment.



## SPIDERS VS. SPYDERS

Classic cars are back again with the Spyders in the Garden show. A collection of thirty classic and replica Spyders will be featured throughout the garden during the day-long event. The pre-1970s cars will include a variety of makes from Alfa Romeo, Fiat, Ferrari, and Porsche.

Kids can also learn about spiders of the eight-legged variety at Andre Campbell's World Famous Spider Show. Other children's activities include a car-themed scavenger hunt, a photo opportunity behind the wheel of a miniature car, and of course the opportunity to talk to the owners and drivers of these classic automobiles.

Enjoy the classic cars in a different light, as they pull up to the Peacock Café for a special evening reception. Chat with the car owners and learn about Southern California car culture from those who know it best. Contact Brittany Fabeck at 626-821-3237 or [brittany.fabeck@arboretum.org](mailto:brittany.fabeck@arboretum.org) for more information.

### SPYDERS IN THE GARDEN

Sunday, October 6; 9am-4:30pm

ANDRE CAMPBELL'S WORLD FAMOUS SPIDER SHOW  
Noon; 12:30; 1:00; 1:30pm

EVENING RECEPTION  
5-7pm



Photo of Feast chefs by Ana Ponzo; summer hours: Dolly Paul

## SUMMER HOURS FOR MEMBERS

Daily 7:30am entry; Wednesdays stay until 7pm (last entry at 6:30)

You can get a jump on the heat by starting your morning walk or visit as early as 7:30am. If you prefer an evening cool down, the garden is open until 7pm on Wednesdays. The extended hours are in effect until September 21.

## GARDENING FOR HEALTH AND HAPPINESS

Who needs a gym, spa or therapist when you have a beautiful, bountiful garden that feeds the body as well as the soul? Tending a garden is terrific exercise. Communing with nature provides a peaceful retreat. Designing artful landscapes is a creative way to de-stress and re-energize. Gardening for Health and Happiness is the theme of a day-long seminar in October presented by the Garden Conservancy and the Arboretum. Speakers will cover topics such as: the best way to benefit from a garden workout; the ideal fruits and vegetables to grow in California; herbs for health, healing and eating; landscape design; and feng shui. Begin the day with an energizing yoga class.

### GARDENING FOR HEALTH AND HAPPINESS

Saturday, October 19; 9am-3pm

Early-bird Yoga in the Garden; 7:45am

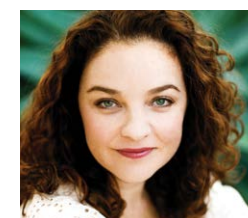
Check-in and registration; 8:30am

\$80 Members of the Garden Conservancy and LA Arboretum; \$90 General admission; Includes lectures, organic lunch, and guided garden walks; Register online [www.gardenconservancy.org](http://www.gardenconservancy.org) or call the Garden Conservancy at 845-424-6500 (Garrison, NY)

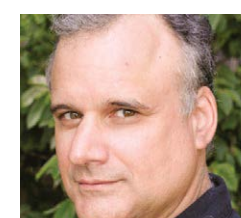
SPECIAL REDUCED RATES WHEN YOU REGISTER BY SEPTEMBER 1

\$65 Members of the Garden Conservancy and LA Arboretum; \$75 General admission

### FEATURED GUEST SPEAKERS



JAYME BARRETT is the best-selling author of *Feng Shui Your Life*, which is about feng shui, interior design, life enhancement, gardens and outdoor spaces.



JEFFREY RESTUCCIO is the author of *Fitness the Dynamic Gardening Way* and *Get Fit Through Gardening: Advice, Tips, and Tools for Better Health*.



MARY PALMER DARGAN, a landscape architect, is the author of *Timeless Landscape Design: The Four-Part Master Plan* and *Lifelong Landscape Design*.



CLAIRE SPLAN writes a blog, An Alameda Garden, and is the author of *California Fruit & Vegetable Gardening: Plant, Grow, and Eat the Best Edibles for California Gardens*.



TAMMI HARTUNG of Desert Canyon Farm is the author of *Growing 101 Herbs That Heal: Gardening Techniques, Recipes, and Remedies* and *Homegrown Herbs: A Complete Guide*.



CANDYCE COLUMBUS is a certified yoga instructor who teaches classes at the Arboretum. Yoga has been an integral part of her life and well-being for more than 16 years.

## CONCERTS AT THE ARBORETUM

### FAMILY SUMMER NIGHTS

Live music on select Friday nights features a variety of family-friendly entertainment and popular local bands. Bring a picnic or purchase food from the Peacock Café. Concerts begin at 6pm; gates open at 4:30. General admission is \$5; \$3 for children 5-12; free for Arboretum members and children 4 and under.

SPYDER BLUE BAND  
Friday, July 5

RT N' THE 44S  
Friday, July 26

HOBO JAZZ  
Friday, August 16

### PASADENA POPS

All events offer entry for picnicking at 5:30pm and the concerts begin at 7:30pm. To purchase tickets, visit [www.pasadenasympphony-pops.org](http://www.pasadenasympphony-pops.org) or call 626-793-7172.

MICHAEL FEINSTEIN'S MGM MOVIE CLASSICS  
Saturday, July 13

CLASSICAL MUSIC TOUR, MUSIC OF THE BEATLES  
Saturday, August 10

MICHAEL FEINSTEIN: THE GERSHWINS & ME  
Saturday, September 7







# SANTA ANITA DEPOT

*in the era of the Gold Line*

The most remarkable feature of the Santa Anita Depot is that the building still exists. Originally constructed on Colorado Boulevard and Old Ranch Road in 1890 by the Atchison, Topeka and Santa Fe Railroad, the station was a bustling local stop for the Baldwin Ranch and residents of Sierra Madre. By 1940, the depot mainly functioned as just a post office. It was closed and then abandoned. By the sixties the building was doomed to demolition to make way for the 210 Freeway.

In spite of being closed and neglected, the threat to the structure caught the attention of surrounding communities. Residents with roots in the area or a connection to the railroad discovered they had a special fondness for the building and its destruction roused the surrounding communities to save the Depot. Efforts to save the building were underway by 1966 in a preservation project that involved the Arcadia Historical Society, the City of Arcadia, the Arboretum, and many other stakeholders.

In 1970, the building was dismantled and reconstructed on the grounds of the Arboretum. A modern framed shell was built and the original bricks and wooden elements fitted in place. Although it was moved from its original location, it was still eligible for heritage listing. The Depot is listed with the California Office of Historic Preservation as Point of Interest P33.

The design of the Depot is consistent with other railroad buildings in America at the time. Similar structures can be found in Walter Gilman Berg’s reference work of 1893 *Buildings and Structures of American Railroads*. A notable exception is that while these buildings were for the most part made of wood, the Santa Anita Depot was made of brick from Elias J. “Lucky” Baldwin’s nearby brick factory.

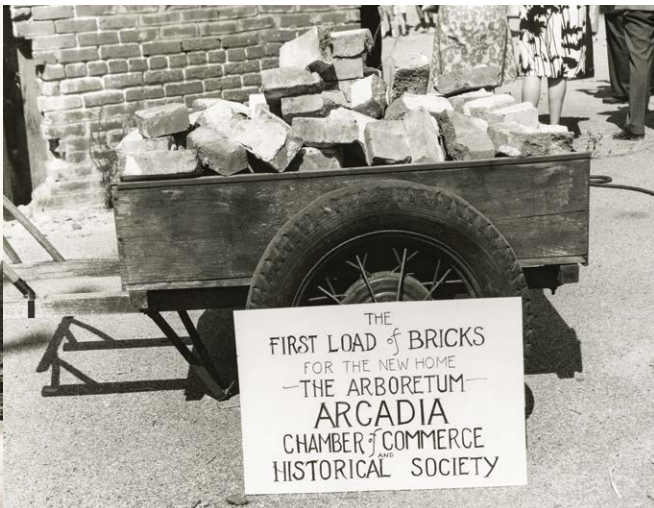
The two-story building provided living quarters above for the station master who needed to be present 24 hours a day, seven days a week to deal with the business of the railroad. Passengers and freight, mail and the comings and goings of trains consumed the station agent’s time.

The Depot was not only a point of departure and arrival but it also was a social center, a place to pick up mail and packages (to say nothing of livestock, lumber, kit houses and almost anything else which could and was shipped by rail). The depot was very much a focal point for the surrounding communities, serving both as a transportation hub and the local post office until its activity was slowly supplanted by the internal combustion engine, which delivered both mail and passengers in a less communal fashion by 1940.

Once the Depot was saved from destruction and beautifully reconstructed in its present location, the Arboretum needed to make it available to visitors and tell the story of the building and what it once meant to the area.



*The original Santa Anita Depot was a bustling social center for surrounding communities as well as a transit point for goods and mail. The relocation to and reconstruction of the Depot (above) at the Arboretum began in 1970. The architectural drawing, right, provides details for the continuing restoration of the Depot.*



Today, a roster of about thirty volunteers, members of our Los Voluntarios organization, keep the Depot doors open for visitation three days a week. This on-going volunteer commitment is the second most remarkable feature of the Depot after its preservation by the community.

Time has taken its toll on the Depot in other ways. The building will be getting a new roof in the next year as well as a new coat of paint and much needed repairs to the woodwork of the building including the sagging balcony.

Funds permitting, we also hope to restore several features to the roof which have been lost over the years: the decorative Victorian ridge board on the roof, the Santa Anita sign and the eyelet feature of the roof of the balcony. Sadly, the tall chimneys cannot be reconstructed due to current earthquake code.

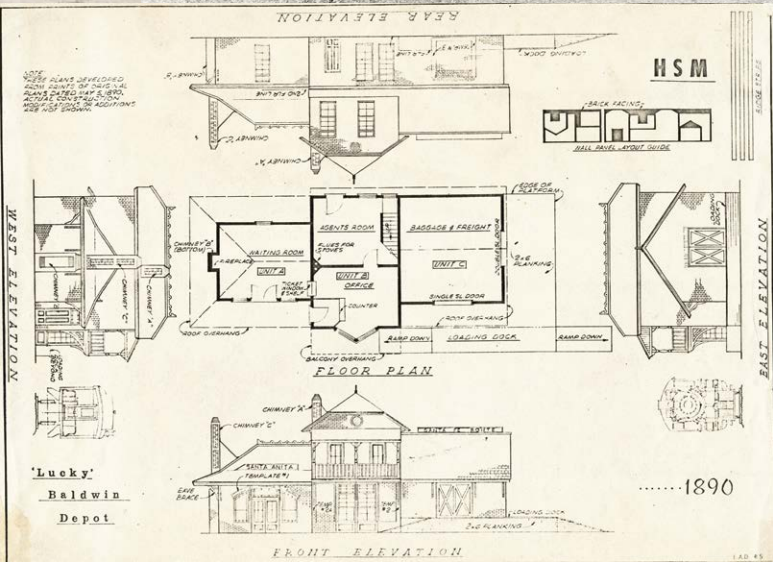
The original drawings for the building by the architect indicate ridge boards on the peaks of the first story roofs as well but we have no evidence that they were ever built. Perhaps someone in the community can prove otherwise?

The building has a remarkable feeling and continues as a much loved part of the history of the area. It is an old friend for the community as well as a charming new one for those who are just getting to know the Santa Anita Depot. 🍋

—*Mitchell Hearn's Bishop is curator of historical collections at the Arboretum.*

—*Linda Moore is volunteer chair, Los Voluntarios.*

**SANTA ANITA DEPOT TOURS**  
Tuesdays, Wednesdays; 10am–4pm; Sundays 1–4pm  
Free with admission, members free



**VOLUNTEERS NEEDED**

Although we have faithfully preserved the Santa Anita Depot and kept it open, we find ourselves in the position of needing more volunteers. We welcome anyone who might be interested in joining us as a docent at the Depot.

It is a marvelous opportunity to share the Depot’s history with visitors from all over the world, and for visitors to share their experiences and memories with us. And it is one of the few places in the Los Angeles area where children and young people can see life as it was over one hundred years ago.

Not long ago while working at the Depot, volunteer Linda Moore was greeted by the proud, exuberant voice of a visitor exclaiming that her great-grandfather had worked at Rancho Santa Anita for Lucky Baldwin, just one example of the personal stories staff and volunteers hear from visitors.

For information about becoming a volunteer, please call Nancy Carlton at 626-802-8471 or [nancy.carlton@arboretum.org](mailto:nancy.carlton@arboretum.org).





# ORCHID WHISPERER

*Julie Norman tends a large and diverse collection*

It’s 6:30 in the morning, a cat wanders out of a greenhouse, inside a phone rings. “Orchid greenhouse,” answers a cheerful Julie Norman, who oversees the Arboretum’s vast collection of 9,000 plants. For 25 years she has been caring for the orchids and closely managing the microclimates of five greenhouses. The thriving collection is one of the five largest and most diverse public collections in the United States.

Julie is working in one of the greenhouses where she tends plants. Orchids were among the first group of plants to be featured in the Arboretum’s living collections, dating back to the early 1950s. Today, the collection has grown in diversity to 162 genera and 2,079 species. It includes donated and purchased orchids as well as others from three collecting expeditions and some from the USDA Plant Rescue Center Program. In between monitoring temperatures and watering, Julie discussed orchids as a job.

**What was your opinion of orchids before you began caring for them daily?**

I thought orchids were exotic and only knew of the most commonly cultivated orchids at that the time, which were cymbidiums and cattleyas.

**What are the challenges of managing such an extensive collection?**

The biggest challenge is keeping the mechanical features of the greenhouses in proper working condition. The glass greenhouses were completed in 1956, 1957, 1959 and 1960 so they have on-going maintenance issues as does the most recently built orchid greenhouse which was completed in 1989. These aging greenhouses make it a challenge trying to maintain the proper temperatures and humidity levels for so many different orchid species housed in one greenhouse. All of the orchids are hand-watered which is time consuming, particularly in the summer, but it gives me a chance to observe the individual plants. Weed and pest control are always on-going challenges.

**What are your favorite orchids? Why?**

I actually do not have a favorite orchid because each orchid is so diverse in its color and form that it has its own unique beauty.

**Is there an average life span for an orchid?**

Orchid growing is not a modern hobby. The Chinese have been growing orchids in China for over 2,500 years. The species grown then were the small-flowered terrestrial (ground-growing) cymbidiums. Orchid growing as we know it today was adopted in England by the wealthy class when the tropical regions of the world were opened to European trade in the 1700s. Some of the divisions of the original plants exist in collections today. The Arboretum’s oldest orchid dates to 1958.

**Was there ever an orchid that you just couldn’t coax into a Southern California lifestyle?**

There have been some very challenging orchids to grow, some of which just didn’t make it and are now residing in the big orchid place in the sky.

**What is the best part of your job?**

The best part are the living things, plants and people, along with making L.A. County a more beautiful place by showcasing the Arboretum’s orchid collection to a worldwide audience. It’s also nice to have a cat in the greenhouse.

**Which orchids would you recommend to the home gardener for indoor or outdoor?**

The orchid that I would recommend for indoors is the *Phalaenopsis* and the *Cymbidium* for outdoor growing.

**Phalaenopsis once so precious is now so ubiquitous from supermarkets to Costco that it is no longer perceived as special. Is that good or bad for the image of orchids?**

It is both good and bad. The change in status of the orchid has come about because of improvements in orchid propagation as well as improved cultural practices. Orchids are now available in mass quantities to the mass audience which simply makes them attainable so now anyone can grow an orchid. At the same time, it limits the number of unique mom and pop growers as well as orchid diversity and contributes to the image of the orchid as being less esoteric and exotic.

**Do you have orchids in your house or garden?**

I have two cymbidiums at home. I don’t have much space since I only have a postage-stamp-size garden. I come to the Arboretum, my second home, to take care of other orchids. 🌱



The Arboretum’s collection consists mainly of species orchids typically found in the wilds as well as hybrids propagated by growers. Opposite: *Laelia superbians* variety *alba*; Above: *Phalaenopsis manni*; Julie Norman in the greenhouse; *Rhycholaelia digbyana*.

## HOW DO I CARE FOR MY *PHALAENOPSIS*?

Generally the best way to care for an orchid is to replicate conditions of its native habitat. The *Phalaenopsis* found in stores are mass-produced hybrids. Their natural wild habitat is tropical Asia and Australia where the plants, also known as moth/butterfly orchids, grow in trees and directly on moist cliff faces where there is plenty of shade and high humidity. To create such conditions indoors, Julie offers these tips:

Water is especially critical. Plants should be thoroughly watered and then not watered again until nearly dry or when 65% of the water has evaporated—pick up the pot and if it feels light, it’s time to water.

Humidity is important. The recommended level is between 50 to 80% with some air circulation to avoid bacterial and fungal problems. This can be achieved in the home by setting the plants on trays of gravel partially filled with water so that the pots never sit in water.

Fertilize on a regular schedule, especially if the weather is warm when the plants are actively growing. A balanced water-soluble liquid fertilizer (such as 20-20-20) is best with twice-a-month applications. If your plant is growing in a

bark-based medium, apply a high nitrogen fertilizer (such as 30-10-10) every fifth feeding. Some growers apply fertilizer at one-quarter strength with every watering. I refer to this as “weakly weekly” and it is best when the plant is in warm, humid conditions. When cooler or overcast, fertilizer should be applied twice a month at weak strength.

Light is generally easy to provide for the *Phalaenopsis* as they grow easily in a bright window without direct sun. An east window is ideal in the home; shaded south or west windows are acceptable. The best rooms for the plant, providing they have adequate light, are the kitchen and the bathroom since these rooms are generally more humid.

A single *Phalaenopsis* spike usually flowers for two or more months. After the last bloom falls, cut the stalk where the lowest flower appeared and cut just above a node. This will encourage the flower stalk to send out a new spike of blooms if the plant is healthy and the variety is prone to secondary spikes. The new spike should develop and bloom in three months. After the last flower on the secondary spike has faded, cut the flower stalk near the base of the plant just above a node. 🌱

Photos by Frank McDonough





# ONCE IN A LIFETIME

*Celebrating a botanical grand finale*



Above: Before blooming, MacDougal's century plant stands an average of 15 feet from a swollen base.

Some plants can grow for 50 years or more without flowering and producing fruits but when they finally do, their floral display can be spectacular—and bittersweet as a new phase begins in the plant's life. One such plant is the Arboretum's *Furcraea macdougalii*, a native of high-elevation dry forests, from 2,500 to 3,500 feet elevation in Oaxaca, Chiapas and Puebla in Mexico. Three plants flowered near the base of Tallac Knoll in February and March.

MacDougal's century plant is one of the most spectacular and dramatic plants in the agave family. It forms a slender trunk to 15 feet tall from an abruptly swollen base and is topped with a rosette of fleshy, narrow leaves to 7 feet long and 3 inches wide with curved teeth along the margins. A "skirt" of old, dead, dried, brown leaves somewhat conceals the slender trunk.

Looking like an agave with a trunk and growing in relative anonymity for many years, MacDougal's century plant really makes a name for itself when it shoots up a huge terminal flower stalk laden with greenish white, tubular flowers. The stalk is as large as the plant itself and adds an additional 20 feet to the overall height.

Although spectacular, this flowering event signals the end of the life of MacDougal's century plant because the plant dies after flowering, slowly disintegrating and decomposing over many years in dry climates. However, miniature plants called bulbils form on the flower stalks and these can be used to propagate new plants. Plants do best in full sun and require little water once established in the garden or landscape.

Thomas Baillie MacDougal (1895-1973), a Scotsman who lived in New York but traveled frequently to Mexico



to explore for plants, primarily in the southern part of the country, discovered this plant. The species is based on the botanical collection he made about 50 miles northeast of Tehuantepec in Oaxaca, Mexico on November 20, 1953. MacDougal, who fought in World War I and immigrated to the United States after the war, was trained in forestry in New York. He quickly became fascinated with Mexico and its fabulous flora, especially cacti and other succulents, and he made annual travels there, mostly to Oaxaca and Chiapas, for nearly 50 years.

Eizi Matuda (1894-1978), a Mexican botanist of Japanese ancestry and MacDougal's friend, named this plant in his honor in 1955. Many years before, French botanist Etienne Pierre Ventenat (1757-1808) named the genus *Furcraea* in honor of Antoine Fourcroy (1755-1809), a fellow countryman who was a chemist, politician and director of the Jardin des Plants in Paris, among other pursuits.



Opposite and below: MacDougal's century plant produces delicate greenish white, tubular flowers just once in its lifetime. Left: It doubles in height when a huge flower stake shoots up; Bottom right: Three-year-old plants.

The Arboretum's original acquisition of MacDougal's century plant in 1966 consisted of eight plants. A bevy of young plants, mostly only a few feet tall and without trunks, densely covers the ground marking the sites of previously-flowered plants. The new plants are the descendants of four plants that flowered at different times in recent years. One plant remains to flower in the near future, thus naturally concluding the lives of this acquisition except for the new generation of progeny that will flower in another half century. You can still catch this unusual and spectacular display of flowering structures and plantlets along the road at the base of the hill going up to Tallac Knoll. 🌱

— Donald R. Hodel, environmental horticulture advisor at University of California ANR, Cooperative Extension.

— James E. Henrich, curator of living collections at the Arboretum.

Photos by Donald R. Hodel





SESSION 4 July 8 – 12	SESSION 5 July 15 – 19	SESSION 6 July 22 – 26
SESSION 7 July 29 – August 2	SESSION 8 August 5 – 9	

## NATURE CAMP

Nature, teamwork, exploration, imagination, and fun are just a few things children will find at the Summer Nature Camp. They will spend a week exploring plants and history throughout the Arboretum. Pack a magnifying glass so we can examine plants and bugs. Is your child “naturally” artistic? Tap that creativity as we paint, draw, and sculpt crafts of our environment. All activities are led by instructors and guided by counselors.

Ages 5–10; Ayres Hall for drop off and pick up

FULL DAY: 9am–3:30pm; \$300 members; \$335 non-members; 10% sibling discount; T-shirt included

HALF DAY: 9am–Noon; 12:30–3:30pm; \$150 members; \$168 non-members; 10% sibling discount; T-shirt included

DAILY: \$65 members; \$70 non-members

EXTENDED CARE AVAILABLE:

MORNINGS: 8–9am; \$25 members; \$30 non-members

AFTERNOONS: 3:30–5pm; \$30 members; \$35 non-members

For more information, please contact Ted Tegar:

ted.tegart@arboretum.org or 626-821-5897.

To register for camp, please call 626-821-4623.



## SPOOKY CREATURES

Who knows what lurks in the garden in the dark of night? Find out when we take a Halloween jaunt and discover who hangs out in the garden after dark. See what scary things nature has to offer on docent-led hikes through the garden. Come in costume if you'd like and remember to bring a flashlight. There will be Halloween crafts and other activities as well.

### SPOOKY CREATURES IN THE GARDEN

Saturday, October 26; 5–8pm

\$5 per child for members; \$8 per child for non-members



## CHILDREN'S NATURE BOOKS IN CHINESE

Twenty new Chinese language picture books are the latest additions to the Arboretum Library's multi-lingual books for children. Designed for kids from infants to 10, the imaginative and inspiring tales focus on the experiences of children with plants, gardens and nature. Each is a fun read for those familiar with or learning Chinese. Share the experience with your children or grandchildren. The books may be checked out for three weeks from the library.



## EVENTS

### ARBORETUM SUMMER NIGHTS

SPYDER BLUE BAND

Friday, July 5; 6pm

RT N' THE 44S

Friday, July 26; 6pm

See page 7 for details.

### PASADENA POPS

MICHAEL FEINSTEIN'S

MGM MOVIE CLASSICS

Saturday, July 13; 7:30pm

See page 7 for details.

## GARDENING

### SQUARE FOOT GARDENING WORKSHOP

Saturday, July 20; 10am–1pm;

Bamboo Room

\$25 members; \$30 non-members

Instructor: Jo Ann Carey

Nothing compares to the flavor of food grown in healthy soil, without pesticides, and allowed to grow until just the right time for harvesting. Square foot gardening uses only 20% of the land space of a conventional garden and saves both water and time.

## KIDS & FAMILY

### BOOKWORMS STORYTELLING PROGRAM

WATER IN THE GARDEN

Wednesday, July 10; 10:30am;

Wednesday, July 17; 10:30am;

Saturday, July 20; 10:30am;

Main Entrance

Free with admission; members free

Come explore the Arboretum Library and our great story trees! Enjoy plant and nature stories, an adventure in the Arboretum and/or a take-home craft. This is an indoor/outdoor program that will go rain or shine, so please dress appropriately. This program is recommended for ages 3–6.

### KIDSART AT THE ARBORETUM

Saturdays, July 13 – August 31;

10–11am or 11:15am–12:15pm

\$133 per summer session. For more information or to register, please call KidsArt at 818-248-2764.

Help develop attention, ability, and self-confidence. KidsArt teaches drawing so that students have the opportunity to learn fundamental skills. Students learn how to “see” in a new way. KidsArt teaches students how to measure with the eye, how to break something into its parts and put it back together again to make a whole picture.

## COLLECTIONS

### SANTA ANITA DEPOT TOURS

Tuesdays, Wednesdays; 10am–4pm;

Sundays, 1–4pm

Free with admission; members free

Visitors can tour the inside of this historical treasure with a knowledgeable docent and learn about what this depot was like when it was operational.

### PLANT INFORMATION

TOUR OF THE STORRIER-STERNS

JAPANESE GARDEN IN PASADENA

Wednesday, July 3; 1:30–3pm;

Plant Information Office

Fee for garden entry; Tours are self-

driven. For details, contact Frank

McDonough, 626-821-3236 or

frank.mcdonough@arboretum.org

Instructor: Frank McDonough

### READING THE WESTERN LANDSCAPE BOOK CLUB

TELEGRAPH AVENUE

BY MICHAEL CHABON

Wednesday, July 10; 7pm;

Arboretum Library

Free; RSVP 626-821-3213 or

susan.eubank@arboretum.org

The Reading the Western Landscape Book Group explores the portrayal of western North American landscape in fiction, non-fiction, and poetry. New members welcomed.

### DOCENT-LED WALKING TOURS

Tuesdays – Thursdays; 10am

Free with admission, members free

Experience the wonders of the Arboretum on a morning walk with a knowledgeable volunteer docent. Other weekday times can be arranged with at least one week's advanced notice. Contact Nancy Carlton, Volunteer Manager, at 626-802-8471, or nancy.carlton@arboretum.org.

## ART

### ART WORKSHOP

Mondays, July 1 – August 19;

9:30–11:30am; Oak Room

\$40 members; \$45 non-members

This is a self-directed workshop (no official instructor) that provides a supportive, encouraging environment for those who wish to pursue their artistic endeavors in watercolor, graphite, pastels, etc.

### BOTANICAL ART AND

### ILLUSTRATION WITH

### CRISTINA BALTAYIAN

Tuesdays, July 2, 9, 16, 23;

10am–2pm; Oak Room

\$255 members; \$275 non-members

Saturday, July 13; 10am–4pm

(includes lunch break); Oak Room

\$95 members; \$115 non-members

The emphasis will be on plant observation, drawing, composition, color theory and matching, and medium techniques. In conjunction with the Botanical Artists Guild of Southern California, students will be studying and portraying many of the Arboretum plant introductions from the last 50 years to document the invaluable contribution by the Arboretum to the state of California.

## FITNESS

### YOGA IN THE GARDEN

EVENINGS: Tuesdays, July 2, 9, 16,

23; 6–7:15pm

MORNINGS: Thursdays, July 11, 18,

25, August 1; 9:30–10:45am;

Main Entrance

\$30 members; \$35 non-members;

\$10 drop-in rate per day

Instructor: Candyce Columbus

The sessions begin with a 10-to-15-minute stroll through the garden prior to an hour-long rejuvenating traditional Indian Hatha yoga session.

### PASADENA HUMANE SOCIETY: INTERMEDIATE OBEDIENCE “COME, SIT, STAY” CLASS AT THE ARBORETUM

Mondays, July 29 – August 26;

6–7pm; South Bauer Lawn

\$120 General Registration; \$100

Arboretum members and PHS adopters;

\$60 Arboretum and PHS and volunteers

For information about specific classes,

please call 626-792-7151, x 155, or visit

www.pasadenahumane.org





# AUGUST AT THE ARBORETUM

## EVENTS

### PASADENA POPS

CLASSICAL MUSIC TOUR,  
MUSIC OF THE BEATLES  
Saturday, August 10; 7:30pm  
*See page 7 for details.*

### ARBORETUM SUMMER NIGHTS

HOBO JAZZ  
Friday, August 16; 7pm  
*See page 7 for details.*

### INTER-CITY CACTUS SHOW AND SALE

Saturday – Sunday, August 17 – 18;  
9am–5pm; Ayres Hall  
*Free with admission; members free*  
The Los Angeles, Long Beach and San Gabriel Valley Cactus and Succulent societies present exotic cacti and succulents typically found in deserts, jungles and mountain highlands, and some that are rare and endangered in their native habitat. Seminars on how to grow cacti and succulents and how to landscape with drought resistant plants will be scheduled.

## LOOKING AHEAD

## THURSDAY GARDEN TALKS WITH LILI SINGER

Thursdays, September 12 – October 31; 9:30am–Noon; Palm Room  
\$100 for the series, \$20 per class; *Reservations or pay at the door. Please note special times for field trips, which are self-driven and require pre-registration. For information and registration: 626-821-4623 or jill.berry@arboretum.org*

### FALL VEGGIE-GARDEN PLANNING WORKSHOP

September 12  
*with Christy Wilhelmi, founder of www.GardenNerd.com and author of Gardening For Geeks*

### FIELD TRIP: A WONDERFUL WILDLIFE OASIS, BEVERLY HILLS

September 19; 10:00–12:30pm  
*Details to come; pre-registration required*

### THE WORLD OF ROSES: PAST, PRESENT AND FUTURE

September 26  
*with Dani Hahn of Rose Story Farm, Carpinteria*

### BENEFICIAL INSECTS: GOOD BUGS IN THE GARDEN

October 3  
*with Lili Singer, horticulturist, garden writer and educator*

## GARDENING

### HORTICULTURAL SCIENCE

(A MT. SAN ANTONIO COLLEGE CLASS)  
Tuesdays, August 20 – December 10;  
5–9:30pm; Palm Room  
\$30 payable to the Arboretum;  
\$167 payable to Mt. SAC;  
*For information, call Mt. SAC at 909-594-5611, x4540.*  
*Instructor: Dave Lannom*  
This for-credit class (3 units) is about basic horticulture skills and techniques for use in gardening, nursery and landscape applications. Emphasis is on propagation, cultural practices and the study of plant relationships, structure, growth and development. Students must register through Mt. SAC before the class. [www.mtsac.edu](http://www.mtsac.edu)

### CALIFORNIA NATIVE PLANT HISTORY

October 10  
*with Matt Ritter, associate professor of biology, Cal Poly Pomona and director of Cal Poly Plant Conservatory*

### FIELD TRIP: MT. SAN ANTONIO COLLEGE, DEPARTMENT OF HORTICULTURE, WALNUT

October 17; 10:00am–Noon

### TREE HEALTH FROM NURSERY SAPLING TO GARDEN SPECIMEN

October 24  
*with Rebecca Latta, ISA Certified Arborist and tree risk assessor*

### WINTER GROWERS: BULBS AND SUCCULENTS OF THE MEDITERRANEAN, SOUTH AFRICA AND THE AMERICAS

October 31  
*with Tom Glavich, bulb collector and vice president of Cactus & Succulent Society of America*

## KIDS & FAMILY

### BOOKWORMS STORYTELLING PROGRAM

*YOU CAN DO THAT WITH DIRT? ALL THE WAYS TO COMPOST*  
Wednesday, August 7; 10:30am;  
Saturday, August 17, 10:30am;  
Wednesday, August 21; 10:30am  
*See page 15 for details.*

### KIDSART AT THE ARBORETUM

Saturdays, August 3, 10, 17, 24, 31;  
10–11am; 11:15am–12:15pm  
*See page 15 for details.*

## COLLECTIONS

### SANTA ANITA DEPOT TOURS

Tuesdays, Wednesdays; 10am–4pm;  
Sundays, 1–4pm  
*See page 15 for details.*

### PLANT INFORMATION

SOUTH AMERICAN TREES FOR THE SOUTHERN CALIFORNIA GARDEN  
Wednesday, August 7; 1:30–3pm;  
Plant Information Office  
*Free with admission; members free*  
*Instructor: Frank McDonough*

### READING THE WESTERN LANDSCAPE BOOK CLUB

*THE DISTANCE BETWEEN US*  
BY REYNA GRANDE  
Wednesday, August 14; 7pm  
*See page 15 for details.*

## ART

### ART WORKSHOP

Mondays, August 26 – October 14;  
9:30–11:30am; Oak Room  
*See page 15 for details.*

### BOTANICAL ART AND ILLUSTRATION WITH CRISTINA BALTAYIAN

Tuesdays, August 6, 13, 20, 27;  
10am–2pm; Oak Room

Saturdays, August 10; 10am–4pm  
(includes lunch break); Oak Room  
*See page 15 for details.*

## FITNESS

### YOGA IN THE GARDEN

EVENINGS: Tuesdays, August 6, 13,  
20, 27; 6–7:15pm  
MORNINGS: Thursdays, August 8, 15,  
22, 29; 9:30–10:45am  
*See page 15 for details.*

# SEPTEMBER AT THE ARBORETUM



## EVENTS

### PASADENA POPS:

MICHAEL FEINSTEIN:  
THE GERSHWINS & ME  
Saturday, September 7pm  
*See page 7 for details.*

### FEAST AT BALDWIN RANCH

Sunday, September 22; 5–9pm  
*See page 6 for details.*

### TASTE OF ARCADIA

Monday, September 23; 5:30–8pm;  
East Bauer Lawn  
*Tickets at [www.arcadiachamber.org](http://www.arcadiachamber.org)*  
The Arcadia Chamber of Commerce's Taste of Arcadia will dish up fare from more than 30 restaurants. The fundraising event will include a no-host bar, a raffle drawing and live music. Part of the proceeds will be donated to the Los Angeles Arboretum Foundation.

### MEMBERS ANNUAL MEETING

Saturday, September 28; 9am–Noon;  
Queen Anne Cottage Lawn  
*Free with admission; members free*

## GARDENING

### WHAT TREE IS THAT? NEW TREES!

Saturday, September 7; 10am–Noon;  
Bamboo Room/Arboretum grounds  
\$25 members; \$30 non-members  
*Instructor: Jerry Turney*

How much do you know about the trees around you? One Saturday a month, Dr. Jerrold Turney, plant pathologist and certified arborist, will introduce you to 15–20 new trees. The one hour lecture will focus on a pre-selected list followed by a walk in the gardens to actually view the trees discussed in the lecture.

### GARDEN TALKS WITH LILI SINGER

Thursdays, September 12, 19, 26  
*See opposite page for details.*

### COMPULSIVE GARDENERS

Fridays, September 20 – November 8  
CLASS FULL

### ORGANIC FRUIT AND VEGETABLE GARDENING

Saturdays, September 14;  
12–4pm; Palm Room  
\$25 members; \$30 non-members  
*Instructor: Jill Morganelli*  
Learn to grow fruits and vegetables organically in your home garden! Save money at the grocery store and develop a healthy lifestyle for your family by reaping the nutritional benefits of eating fresh-grown produce. This quarterly class focuses on seasonal fall production and covers a variety of topics.

## COOKING

### FRESH: CELEBRATING THE TABLE

GALE KOHL CELEBRATES MEXICAN INDEPENDENCE DAY!  
Wednesday, September 11; 3–5pm;  
Oak Room  
\$50 members; \$60 non-members  
*Reservations required; please call 626-821-4623*  
Every September 15th, Mexicans commemorate the war of independence, which was actually initiated in the small town of Dolores in Guanajuato, Mexico on September 16, 1810. To mark the occasion Gale will serve some fabulous dishes from our neighbor to the south.

## KIDS & FAMILY

### BOOKWORMS STORYTELLING PROGRAM

*MADAGASCAR IN L.A.: WELCOME TO THE SPINY FOREST*  
Wednesday, September 11; 10:30am;  
Saturday, September 14, 10:30am;  
Wednesday, September 18; 10:30am  
*See page 15 for details.*

### FAMILY FUN CLASSES

ROOT BEER MAKING  
Saturday, September 21; 10am–Noon;  
Rotunda  
\$8 per child for members; \$10 per child for non-members; *Must be accompanied by an adult; Enrollment covers Arboretum admission; Pre-registration required, please call 626-821-4623.*  
Celebrate Oktoberfest! Learn the science of root beer making as you make your own batch to take home.

## COLLECTIONS

### SANTA ANITA DEPOT TOURS

Tuesdays, Wednesdays; 10am–4pm;  
Sundays, 1–4pm  
*See page 15 for details.*

### PLANT INFORMATION

NURSERY TOUR TBA  
Wednesday, September 4; 1:30–3pm;  
Plant Information Office  
*Instructor: Frank McDonough*

### READING THE WESTERN LANDSCAPE BOOK CLUB

*MAGNIFICENCE* BY LYDIA MILLET  
Wednesday, September 11; 7pm  
*See page 15 for details.*

## ART

### IKEBANA

Fridays, September 6–October 25  
ADVANCED: 9:30–11:30am  
BASIC: 11:00am–12:30pm  
Bamboo Room  
\$72 members; \$87 non-members;  
\$32 materials fee payable to instructor  
*Instructors: Reiko Kawamura and Yumiko Kikkawa*

### BOTANICAL ART AND ILLUSTRATION WITH CRISTINA BALTAYIAN

Tuesdays, September 3, 10, 17, 24;  
10am–2pm; Oak Room  
Saturday, September 14; 10am–4pm  
(includes lunch break); Oak Room  
*See page 15 for details.*

## FITNESS

### YOGA IN THE GARDEN

EVENINGS: Tuesdays, September 3,  
10, 17, 24; 5:30pm–6:45pm  
MORNINGS: Thursdays, September 5,  
12, 19, 26; 9:30–10:45am  
*See page 15 for details.*

### FOUR SEASONS OF YOGA AUTUMNAL EQUINOX WORKSHOP

Saturday, September 21;  
9–10:30am; Main Entrance  
\$15 members; \$18 non-members;  
*Instructor: Candyce Columbus*  
To align ourselves with a seasonal change to autumn, we engage in a quarterly, one-and-a-half hour workshop.

### PASADENA HUMANE SOCIETY: DOG OBEDIENCE CLASSES AT THE ARBORETUM

Mondays, September 16 – October 21  
(no class on September 23); 6–7pm;  
South Bauer Lawn  
\$120 General Registration;  
\$100 members and PHS adopters;  
\$60 Arboretum, PHS and volunteers  
Register online at  
[www.pasadenahumane.org](http://www.pasadenahumane.org), or call  
626-792-7151, x 155.  
*See page 15 for details.*



## EVENT

### GARDENING FOR HEALTH AND HAPPINESS

Saturday, October 19;  
7:45am–3:30pm (including lunch)  
*See page 7 for details.*

### SPYDERS IN THE GARDEN

Sunday, October 6; 9am–5pm  
*See page 6 for details.*

### SPOOKY CREATURES IN THE GARDEN

Saturday, October 26; 5–8pm  
*See page 6 for details.*

## GARDENING

### GARDEN TALKS WITH LILI SINGER

Thursdays, October 3, 10, 17, 24, 31  
*See page 16 for details.*

### INTRODUCTION TO PLANT IDENTIFICATION

Fridays, October 4, 11, 18, 25,  
November 1; 2–4pm; Bamboo Room  
\$60 members; \$65 non-members  
*Instructor: Frank McDonough*  
Arboretum Botanical Information  
Consultant Frank McDonough will  
instruct this class that looks at more  
than a dozen major plant families  
represented by specimens at the  
Arboretum. You will learn about plant  
classification, how to identify plants  
using both printed and digital plant  
keys, strategies for using the Internet  
to help you identify plants, and  
other tools and skills useful in plant  
identification.

### WHAT TREE IS THAT? NEW TREES!

Saturday: October 5; 10am–Noon;  
Bamboo Room/Arboretum grounds  
*See page 17 for details.*

## GARDEN DESIGN PRINCIPLES

Saturday, October 12;  
10am–Noon; Palm Room  
\$25 members; \$30 non-members  
*Instructor: Laramie Haynes*  
Laramie Haynes, a Pasadena-based  
landscape designer and contractor, will  
review artistic principles as applied to  
garden design. He will review garden  
photos to help class participants see  
and understand gardens, including  
those which have no grass. Laramie  
has designed attention-getting gardens  
at both the Showcase House and L.A.  
Garden Show.

### SQUARE FOOT GARDENING WORKSHOP

Saturday, October 19; 10am–1pm;  
Bamboo Room  
*See page 15 for details.*

## COOKING

### FRESH: CELEBRATING THE TABLE

CHEF SHACHI MEHRA'S AMAZING  
INDIAN CUISINE  
Wednesday, October 9; 3–5pm  
\$50 members; \$60 non-members  
*Reservations required; please call*  
626-821-4623  
Tamarind of London, a well known  
Michelin-ranked restaurant, made  
its U.S. debut in Newport Beach with  
Shachi Mehra as executive chef. Born  
in India and raised in America, she  
blends her western and Indian cultures  
to create dishes that marry tradition  
and modernity.

## KIDS & FAMILY

### BOOKWORMS STORYTELLING PROGRAM

LOVE THOSE LADYBUGS  
Wednesday, October 2; 10:30am;  
Saturday, October 12; 2pm;  
Wednesday, October 16; 10:30am;  
*See page 15 for details.*

### FAMILY FUN CLASSES

LOST! IN THE ARBORETUM  
Saturday, October 19; 10am–Noon;  
Rotunda  
\$8 per child for members; \$10 per child  
for non-members; *Must be accompanied*  
*by an adult; Enrollment covers Arboretum*  
*admission; Pre-registration required,*  
*please call 626-821-4623.*  
Would your family know what to do if  
you got lost in the outdoors? Join us  
on an adventure as we get “lost” in the  
Arboretum and discover how to find  
the three basic necessities: food, water  
and shelter.

## COLLECTIONS

### SANTA ANITA DEPOT TOURS

Tuesdays, Wednesdays; 10am–4pm;  
Sundays, 1–4pm  
*See page 15 for details.*

### DOCENT-LED WALKING TOURS

Tuesdays – Thursdays; 10am  
*See page 15 for details.*

### PLANT INFORMATION

HERBAL GOODNESS: PLANNING  
AND PLANTING A HERB GARDEN  
THAT SUITS YOUR LIFESTYLE  
Wednesday, October 2; 1:30–3pm  
Plant Information Office  
*Instructor: Frank McDonough*

### READING THE WESTERN LANDSCAPE BOOK CLUB

EL ILUMINADO: A GRAPHIC NOVEL  
BY ILAN STAVANS AND  
STEVE SHEINKIN  
Wednesday, October 2; 7pm  
*See page 15 for details.*

## ART

### BOTANICAL ART AND ILLUSTRATION WITH CRISTINA BALTAYIAN

Tuesdays, October 1, 8, 15, 22;  
10am–2pm; Oak Room  
Saturday, October 12; 10am–4pm  
(includes lunch break); Oak Room  
*See page 15 for details.*

### ART WORKSHOP

Mondays, October 21 – December 9;  
9:30–11:30am; Oak Room  
*See page 15 for details.*

## FITNESS

### YOGA IN THE GARDEN

EVENINGS: Tuesdays, October 8, 15,  
22, 29; 5:30–6:45pm  
MORNINGS: Thursdays, October 3,  
10, 17, 24; 9:30–10:45am  
*See page 15 for details.*

## EVENTS

### WINTER CACTUS SHOW AND SALE

Saturday – Sunday, November 2 – 3;  
9am–5pm; Ayres Hall  
*Free with admission; members free*  
The San Gabriel Valley Cactus and  
Succulent Society exhibits the  
splendors of the fall and winter  
growing succulents and cacti rarely  
seen in summer shows. Featured  
plants will include succulent  
pelargoniums, wild relatives of the  
common geranium, and cyphostemma,  
succulent members of the grape  
family.

### LAS ARTISTAS DE FLORES ART SHOW

Saturday, November 2; 10am–5pm  
Sunday, November 3, 10am–3pm  
*Free with admission; members free*

### AMERICAN CANARY FANCIERS SOCIETY 34<sup>TH</sup> ANNUAL CANARY SHOW AND SALE

Saturday, November 9; 10am–5pm  
*Free with admission; members free*  
Come and see some of the different  
types and colors of canaries. The show  
includes a judged competition and  
canaries for sale. Society members will  
be available to answer your questions.

### AMERICAN CERAMIC SOCIETY CLAY FESTIVAL AND GIFT SHOW

Saturday, November 16; 9:30am–5pm  
Sunday, November 17; 9:30am–4pm  
*Free with admission; members free*  
Enjoy unique, hand-crafted, whimsical  
and one-of-a-kind specialized art work  
from Southern California clay artists.

## GARDENING

### WHAT TREE IS THAT?

Saturday, November 9; 10am–Noon;  
Bamboo Room/Arboretum grounds  
*See page 17 for details.*

## COOKING:

### FRESH: CELEBRATING THE TABLE THE PEG RAHN AND SUSAN KRANWINKLE SHOW!

Wednesday, November 20; 3–5pm;  
Oak Room  
\$50 members; \$60 non-members;  
*Fee includes Arboretum Admission.*  
*Reservations required; please call*  
626-821-4623  
Join Peg and Sue for a cooking class  
that will take you down memory lane.  
For the 12th year in a row, Sue and Peg  
are ready to jump-start your holidays  
with a fun afternoon filled with  
delicious recipes to boost your party  
repertoire. Raffles, laughter and stories  
highlight this FRESH fundraiser.  
Reserve your spot quickly as space is  
limited.

## KIDS & FAMILY

### BOOKWORMS STORYTELLING PROGRAM

CLUCK, CLUCK, CHEEP, CHEEP, PEEP,  
PEEP, THE CHICKENS SAY  
Wednesday, November 6; 10:30am;  
Saturday, November 9, 2pm;  
Wednesday, November 20; 10:30am;  
*See page 15 for details.*

### FAMILY FUN CLASSES

ORNAMENT MAKING  
Saturday, November 16; 10am–Noon;  
Rotunda  
\$8 per child for members; \$10 per child  
for non-members; *Must be accompanied*  
*by an adult; Enrollment covers Arboretum*  
*admission; Pre-registration required,*  
*please call 626-821-4623.*  
Go green for the holidays and  
decorate your Christmas tree with  
recycled items! Find out how to make  
ornaments out of light bulbs, toilet  
paper rolls, CDs as well as natural  
materials from the Arboretum.

## COLLECTIONS

### SANTA ANITA DEPOT TOURS

Tuesdays, Wednesdays; 10am–4pm;  
Sundays, 1–4pm  
*See page 15 for details.*

### DOCENT-LED WALKING TOURS

Tuesdays – Thursdays; 10am  
*See page 15 for details.*

### PLANT INFORMATION

LOCAL FRUIT TREE NURSERY TOUR  
Wednesday, November 6; 1:30–3pm;  
Plant Information Office  
*Tours are self-driven. For meeting*  
*place and details, contact Frank*  
*McDonough, 626-821-3236 or*  
*frank.mcdonough@arboretum.org*  
*Instructor: Frank McDonough*

### READING THE WESTERN LANDSCAPE BOOK CLUB

HOLY LAND: A SUBURBAN MEMOIR  
BY D.J. WALDIE  
Wednesday, November 6; 7pm  
*See page 15 for details.*

## ART

### BOTANICAL ART AND ILLUSTRATION WITH CRISTINA BALTAYIAN

Tuesdays, November 5, 12, 19, 26;  
10am–2pm; Oak Room  
Saturdays, November 9; 10am–4pm  
(includes lunch break); Oak Room  
*See page 15 for details.*

## FITNESS

### YOGA IN THE GARDEN

EVENINGS: Mondays, November 4,  
11, 18, 25; 5:30–6:45pm  
MORNINGS  
Thursdays, November 7, 14, 21;  
9:30–10:45am; \$10 drop-in rate per day  
for November  
*See page 15 for details.*

### PASADENA HUMANE SOCIETY: DOG OBEDIENCE CLASSES AT THE ARBORETUM

Mondays, November 4 – December 9  
(No class on November 25); 6-7pm;  
Ayres Hall  
\$120 General Registration;  
\$100 members and PHS adopters;  
\$60 Arboretum, PHS and volunteers  
Register online at  
[www.pasadenahumane.org](http://www.pasadenahumane.org),  
or call 626-792-7151, x 155.  
*See page 15 for details.*

## GIFT SHOP HOLIDAY OPEN HOUSE

Friday – Sunday, November 8 – 10; 10am–3pm; Gift Shop

*Free with admission; members free*

Get into the spirit of the season with a visit to the Gift Shop, which  
will be all decked out in its holiday finery. You'll find all kinds  
of holiday and garden gifts for your family and friends. Enjoy  
refreshments as well.





## AN OLD-FASHIONED HOLIDAY AT THE QUEEN ANNE COTTAGE

Sunday, December 8; 10am–4pm

*Regular admission applies; members free;*

*Suggested \$3 tour donation; Space is limited*

Stroll down memory lane and view treasures and furnishings normally seen only through the windows of the charming Victorian-era cottage. View the ornate dwelling in its Christmas finery. The cottage has become a Southland tradition for holiday visitors from near and far. Tours will be available throughout the day. Visitors will learn about the history of the Queen Anne Cottage. After the tour, stop by the nearby historic Coach Barn and the Santa Anita Depot.

Photo by Mitchell Hearn's Bishop

## EVENTS

### MAKE AN OLD-FASHIONED WREATH

Tuesday, December 10; 10am–Noon;  
Ayres Hall

*\$35 members; \$45 non-members  
(materials included)*

*Instructor: Marla Carter and Friends*

Create a unique wreath using adornments (both the traditional and the unusual) from the Arboretum grounds PLUS an incredible variety of greens from the Flower Mart. All wreath materials, frame and wire will be provided. Please bring your own gardening gloves and clippers (and any decorations you may wish to add to your creation). This very special class is a tradition at the Arboretum and very popular, so please register early.

## GARDENING

### ORGANIC FRUIT AND VEGETABLE GARDENING

Saturday, December 14; Noon–4pm;  
Bamboo Room

*\$25 members; \$30 non-members*

*Instructor: Jill Morganelli*

Learn how to grow fruits and vegetables organically in your home garden. Save money at the grocery store and develop a healthy lifestyle for your family by reaping the nutritional benefits of eating fresh-grown produce. This quarterly class focuses on seasonal production and covers a variety of topics.

## KIDS & FAMILY

### BOOKWORMS STORYTELLING PROGRAM

IN DECEMBER WE PLANT

Wednesday, December 4; 10:30am;

Wednesday, December 18; 10:30am;

Saturday, December 21; 2pm

*See page 15 for details.*

## COLLECTIONS

### SANTA ANITA DEPOT TOURS

Tuesdays, Wednesdays; 10am–4pm;  
Sundays, 1–4pm

*See page 15 for details.*

### DOCENT-LED WALKING TOURS

Tuesdays – Thursdays; 10am

*See page 15 for details.*

## PLANT INFORMATION

COLORING OUTSIDE THE LINES:  
VISUAL STRATEGIES THAT MAKE  
YOUR GARDEN BEAUTIFUL AND  
YOUR FRIENDS ENVIOUS  
Wednesday, December 4; 1:30–3pm;  
Plant Information Office

*Instructor: Frank McDonough*

READING THE WESTERN  
LANDSCAPE BOOK CLUB  
COLD STARRY NIGHTS: AN ALASKA  
MEMOIR, 2ND ED. BY CLAIR FEJES  
Wednesday, December 4; 7pm

*See page 15 for details.*

## FITNESS

### YOGA IN THE GARDEN

EVENINGS: Mondays, December 2, 9,  
16, 23; 5:30–6:45pm

MORNINGS: Thursdays, December 5,  
12, 19, 26; 9:30–10:45am

*See page 15 for details.*

### FOUR SEASONS OF YOGA WINTER SOLSTICE WORKSHOP

Saturday, December 21;

9–10:30am; Main Entrance

*\$15 members; \$18 non-members;*

*Instructor: Candyce Columbus*

To align ourselves with the seasonal transition to winter, we engage in a quarterly, one-and-a-half hour workshop.

## THANK YOU TO OUR SUPPORTERS

*The Arboretum community is made up of many individuals who share a vision of the vital role the garden plays as a place of learning, inspiration and enjoyment. We are proud to recognize these special friends, foundations and corporations who have made contributions. Thank you to all our donors and members for your philanthropic support.*

### ARBORETUM BENEFACTORS MEMBERSHIP SOCIETY

ROSE GARDEN  
BENEFACTORS \$25,000+  
Dextra Baldwin McGonagle

Foundation  
Wells Fargo Foundation

ENGELMANN OAK  
BENEFACTORS  
\$10,000+

Christen C. & Ben H. Garrett  
Family Foundation

Mr. & Mrs. George Ball  
Georgina Fredrick Children's  
Foundation

The Good Family Foundation

BALDWIN CIRCLE  
BENEFACTORS \$5,000+  
Carl and Henrietta Herrmann  
Family Foundation

Mr. & Mrs. Ron Downs  
Mrs. Anne G. Earhart  
Edgerton Foundation  
Susan & Doug Kranwinkle  
Mr. Anthony Lafetra  
Mr. & Mrs. Philip Miller  
Mr. & Mrs. Ronald Radelet

TALLAC KNOLL  
BENEFACTORS \$3,000+

Mr. & Mrs. James Bang  
Mr. & Mrs. Nurit Burrow  
Mr. & Mrs. Mel Cohen  
Ms. Kristin Creighton  
Joe & Diana Eisele  
Mr. & Mrs. Dan Foliart  
Mr. & Mrs. Ben Garrett  
Mrs. George C. Good  
Dr. & Mrs. Kenneth D. Hill  
Mr. & Mrs. H. Clay "Hap" Kellogg  
Mr. & Mrs. Yung-Hsen Koo  
Phaedra & Mark Ledbetter  
Mr. & Mrs. William Lincoln  
Mr. & Mrs. William F. McDonald  
Dr. & Mrs. G. Arnold Mulder  
Donivee & Merrill Nash  
Mr. & Mrs. Gilbert N. Resendez  
Mr. Richard Schulhof  
& Ms. Sandra Goodenough  
Dr. Chuck Seitz & Mrs. Leah Davis  
Janice Sharp & Dane Hoiberg  
Mr. & Mrs. Timothy Shea  
Mr. & Mrs. Gary Thomas  
Mrs. Petrie M. Wilson

MEADOWBROOK  
BENEFACTORS \$1,000+

Alan Auto Glass  
Arcadia Chamber of Commerce  
Mr. & Mrs. Guilford C. Babcock  
Dr. Dana M. Baldwin  
Mr. Robert Barnes & Deborah Klar  
James & Carolyn Bennett  
Mrs. Hannah G. Bradley  
Mr. & Mrs. Paul Brassard  
Mr. & Mrs. George A. Brumder  
Mr. & Mrs. Mark Charvat  
Mr. & Mrs. Steven Craig  
Mr. & Mrs. James Delahanty

Mr. & Mrs. Stewart Edwards  
Dr. & Mrs. Lincoln Fairchild  
Dr. & Mrs. James Femino  
Ms. Marilyn Filbeck  
Mr. & Mrs. Gordon Fish  
Mr. & Mrs. Yoshio Fujioka  
Burks L. Hamner  
Mr. Bradley Hand  
& Ms. Mary VanCott-Hand  
Mr. & Mrs. Tom Harter  
Mr. Gerald Hermanson  
Mr. & Mrs. Richard Hirrel  
Ms. Judy M. Horton  
John & Ursula Kanel Charitable  
Foundation  
Amanda Goodan & William Koelsch  
Carol G. Libby  
MacFarland Family Foundation  
Ms. Diane Marcussen  
& Mr. David Kristoff

Mr. Noel McCarthy  
Siby & Perry Minton  
Ms. Wendy Munger  
& Mr. Leonard Gumport  
Mr. & Mrs. Robert E. Novell  
Pasadena Community Gardens  
Conservancy  
Peg & Lee Rahn  
Vincent R. Talbot  
Mr. & Mrs. Tetsu Tanimoto  
Mr. & Mrs. Thomas A. Techentin  
Dr. Jim Walters  
& Mrs. Mitzi Zack Walters  
Mr. Edward Watson  
& Ms. Pamela Warner  
Mrs. Christine Wei & Mr. Jeff Chen  
Mr. William Wilk  
Mr. Stephen Woodruff  
Ms. Marie Zimmerman

TULE POND BENEFACTORS  
\$500+

Mr. & Mrs. John Andersen  
Merle & June Banta  
Robert & Jill Bell  
Mr. James Burr  
& Mrs. Kathleen Burr  
Ms. Angie Chen  
Mr. & Mrs. Carl Cooper  
Descanso Chrysanthemum Society  
Epiphyllum Society of America  
Mr. Walter Fidler  
Mr. Michael N. Forster  
Mr. & Mrs. Robert W. Gillespie  
Mr. Richard Gonzalez  
Mr. & Mrs. Frank Griffith  
Mr. & Mrs. Austin H. Hathaway  
Mr. & Mrs. Carl L. Herrmann  
Mr. Edward Kleinbard  
& Ms. Norma Cirincione  
LA Geranium Society  
Dr. Edward Lax  
Ms. Diana Leach  
Mrs. Judy Lee & Mrs. Lin Ho Lee  
Mr. Albert Lo & Ms. Amy Wei  
Los Angeles International  
Fern Society  
Mr. & Mrs. Larry Mielke  
Mr. Gerald W. Miller

Mr. Robert Muse  
& Ms. Diana Selland  
Dr. Margie M. Nicholson  
Joyce H. Olin  
Pacific Rose Society  
Mr. & Mrs. Anthony Parrille  
Pasadena Photochromers  
Ms. Janet Rea  
Mr. & Mrs. Charles Read  
Mr. Ramon Rodriguez  
San Gabriel Valley Cactus  
& Succulent Society  
San Gabriel Valley Orchid  
Hobbyists Inc.  
Santa Anita Bonsai Society  
Mr. Jeff Sease & Mrs. Robin Sease  
Mr. & Mrs. Mickey Segal  
Mrs. Terry Seidler

Mr. & Mrs. Tien-Chang Lee  
Mrs. Linda McManus  
& Prof. Bill Bridges  
Ms. Joan Oakes  
Mr. & Mrs. David B. Oberman  
Mr. & Mrs. Peter Popoff  
Dr. & Mrs. John T. Quigley  
Ms. Sue Redman  
Mrs. Emily Rosedale-Kousoulis  
& Mr. Nick Kousoulis  
Mr. & Mrs. Robert D. Volk  
Mr. & Mrs. Phelps Wood

**\$100+**  
Elizabeth Ames  
Peter Amundson  
Ms. & Mr. Jeanne Anderson  
Dr. & Mrs. Edgardo L. Arcinue  
Baikoen Bonsai Kenkyukai



Dr. Jefferey Sellers  
& Mrs. Laura Scott Sellers  
Mr. & Mrs. Edward Smith  
Southern California Hemerocallis  
& Amaryllis Society  
Southern California Iris Society  
Mrs. Peggy Stewart  
Mr. Charles S. Tilghman  
Town & Country Event Rentals  
Mr. & Mrs. Sidney Tyler, Jr.  
Mr. Frank S. Whiting  
Mr. David Wright  
Nancy Yoshihara  
Mr. Mike Zika

GARDEN SPONSORS \$300+  
Ms. & Mr. Jeanne Anderson  
Mr. & Mrs. Richard Barlow  
Mr. & Mrs. Richard Bensen  
Mr. & Mrs. Craig Bonholtzer  
Mr. & Mrs. Franklin O. Booth III  
Mr. & Mrs. Alex Campbell  
Mr. & Mrs. Robert J. Cathcart  
Ms. Theresa D'Andria  
Mr. & Mrs. Bryant C. Danner  
Mr. & Mrs. Mark Halverson  
Ms. Anita Hirsh  
Mr. & Mrs. Jim Krusoe

Mr. Brandon Bailo  
Joan and Bob Banning  
Mary Beauchamp  
Jack & Alexis Bilheimer  
Bruce & Barbara Bingham  
Mr & Mrs. Troy Bond  
Thomas & Pornlapat Brown  
Mr. & Mrs. Ted Calleton  
La Canada Unified School District  
George Cassat  
Mr. & Mrs. An-Hsiung Chang  
J.C. & Joyce Y. Chen  
Mr. Arthur D. Cohen  
Mr. Arthur L. Crowe  
Ms. Carol E. Cuthbertson  
Ms. Mary McFie-Reed Davidson  
Cynthia & Ed de Beixedon  
Suzanne & Donald Deise  
Dr. & Mrs. John M. Dick  
Mrs. William H. Doheny Sr.  
Mrs. Mary Douglass  
Mr. & Mrs. Paul Fitzgerald  
Mr. & Mrs. Lodi R. Galassi  
Mr. Michael Galindo  
Ms. Laura Garcia  
Janet Haberoth in honor of  
Jean Bell  
Mrs. Anna S. Hallstrom





Mrs. Sondra Hauge  
Mrs. Dorothy C. Hoffman  
Mrs. Jean W. Horton  
Mr. & Mrs. Richard Hotaling  
Ms. Janice Housh  
Patricia Ketchum  
Mr. & Mrs. R. David Kummer  
Ms. Rose O. Lizzcano  
Mr. Frank Long  
& Mrs. Adrienne Long  
Beatrice Mack  
Jeanette Mamakos  
Mrs. Shake Mamigonian  
in honor of James Brownfield  
Mary Marsh  
Mr. & Mrs. Neil B. Martin  
Ms. Maryon Matsuda  
Mr. & Mrs. John C. Matthiessen  
Don & Mary Milefchik  
Weston Milliken  
Dennis & Sharon Murphy  
Mrs. Clara Ninomiya  
Kay & Steve Onderdonk  
Mrs. Paul Penberthy  
Mr. & Mrs. William L. Plunkett  
Katherine Redding & Amy Gillies  
Jean & Stephen Rowe  
Paul & Carolyn Shively  
Sandy Snider & Kevin Kane  
Steve Tavaglione & Sally Tavaglione  
Ms. Drusie Taylor  
Mr. & Mrs. L. Sherman Telleen  
Clara Tien  
Laurie Tribken  
Dr. & Mrs. Ambrose Tsang  
Ms. Patricia Van Koetsveld  
Mr. C. David Watson, Jr.  
& Ms. Alice O'Donnell  
Robert & Helen Weber  
Jonathon & Sarah Weisz  
Mr. & Mrs. Ian L. White-Thomson  
Mr. Rolla J. Wilhite  
Mrs. Jess Witt  
Mrs. Frances Woodring  
Mr. & Mrs. David Yonashiro

**IN HONOR OF  
STEVEN CARMONA,  
STEVEN ENGLISH,  
TOMMY FARMER, AND  
MOLLY MUNGER**  
Compulsive Gardeners Class

**IN MEMORY OF  
LEIF ERIKSEN  
INCLUDING MEMORIAL TREE**  
The Eriksen Family

**IN MEMORY OF  
MARY ALICE FRANK**  
Mr. Richard Frank

**IN MEMORY OF  
DENISE GENOVA**  
Jeff Palmer

**IN MEMORY OF  
MARY LEE HAND  
INCLUDING MEMORIAL TREE**  
Mr. Bradley Hand  
& Ms. Mary VanCott-Hand

**IN MEMORY OF  
DOROTHY KRESGE  
INCLUDING MEMORIAL TREE**  
Edwin & Debbie Andersen  
Jane Anderson  
Geyer & Kelly Andrews  
Bob & Pat Baderian  
Marye Barnett  
Laurel Bullock  
William & Penelope Carroll  
Emma Casillas  
Lyda Chee  
William & Dorothy Collister  
David & Patricia Colville  
Mike & Shirley Curley  
Robert & Kathleen Curry  
Ralph & Jo Ann Derrick  
Margaret & Stephen Engle  
Jerry & Mary Fischer  
Robert & Carolyn Flach  
Kathleen Gleason  
Patti Hahn  
Daryl & Maureen Hons  
Phil & Nancy Keathley  
Sylvia Lauder  
John & Romilda Lovrensky  
Gayle MacGregor  
Duane & Linda Martin  
La Donna McKibben  
Carole Mead  
Patrick McLennan  
Charles & Lois Miller  
Robert & Sharon Novell  
Carolyn & Robert Oberlander  
Dennis & Margaret Page  
Eleanor Reeve Powell  
Holly Scatterday  
Dennis & Karen Schaar  
Sheryl Smith  
Ronald & Beverly Street  
David & Barbara Dee Thompson

Michael & Judith Tims  
David & Marjorie Totten  
Joseph & Martha Wetzell  
Rick & Karen Wilcoxon  
K. & B. Yeung

**IN MEMORY OF  
CARL NICOLA**  
Ms. Linda F. Donato  
Mr. Stephen Hodgson  
**IN MEMORY OF  
AL OHRMUND**  
Mrs. Christine L. Ohrmund

**IN MEMORY OF  
LAN HUYNH PHAM**  
Ms. Lidia Krzyzanowski

**IN MEMORY OF  
WALTER PSAILA**  
Mr. & Mrs. Tom Harter

**IN MEMORY OF  
VIVIEN RAGSDALE**  
Ms. Marilyn Parrino

**IN MEMORY OF EVA REPPS**  
Ms. Chantal Repps-Heaney  
P.S. 146 Staff, N.Y.C.

**IN MEMORY OF  
JANET BELINDA ROESE  
INCLUDING MEMORIAL TREE**  
The Roese Family

**IN MEMORY OF  
JANE ROMERO**  
Ms. Brenda Fies

**IN MEMORY OF  
MARGRET SCHRÖDER-UZETA  
INCLUDING MEMORIAL TREE**  
Schröder-Uzeta Family

**IN MEMORY OF  
OLIVETTE SHANNON  
INCLUDING MEMORIAL TREE**  
The Shannon Family

**IN HONOR OF GINA SHAW'S  
80TH BIRTHDAY**  
Mr. John Carlton  
& Mrs. Nancy Carlton

**IN MEMORY OF  
BARENDINA VAN ASCH  
INCLUDING MEMORIAL TREE**  
Mr. Ed Van Asch  
& Mrs. Elizabeth Van Asch  
Lee Arce Development Company

#### IN-KIND

Mr. & Mrs. Eric Anderson  
Albert H. Anderson Trust  
Mr. Mitchell Hearn's Bishop  
Mr. & Mrs. Howard D. Bolinger  
California Organic Garden Club  
Betsy S. Desimone  
Mrs. Ellen Farewell  
Mrs. Karen Girardi  
Dr. & Mrs. Kenneth D. Hill  
Mr. & Mrs. Joseph Hogg  
Kellogg Garden Products, Inc.  
Ms. Tanya Koukeyan  
Phaedra & Mark Ledbetter  
Carol G. Libby  
Ms. Kerry A. Morris  
Dr. Frances Powell  
& Ms. Shirley Rosenkranz  
Mr. Fred Rose  
Ms. Karen Seabrook  
Dr. Jefferey Sellers  
& Mrs. Laura Scott Sellers  
Valley Crest Tree Company  
Ms. Cynthia Vargas  
Mr. Edward Watson  
& Ms. Pamela Warner  
Wes's Pets & Feed  
Mr. Don Wood

**GRANTS & PROGRAMS**  
ADOBE RESTORATION  
Mr. & Mrs. John A. Barnes

Mr. Gerry F. Carroll  
Ms. Carol E. Cuthbertson  
Mr. & Mrs. Wayne Gunnels  
Mr. & Mrs. Ronald Kaelble  
Mr. & Mrs. Donald Kay  
Ms. Marsha Keene  
Ms. Marilyn Keiper  
Mr. & Mrs. George MacDonald  
Ms. Dian M. Moravek  
Mr. & Mrs. Ernest Perez  
Mrs. Gayle San Miguel  
Ms. Norma Scranton  
Mrs. Gina Shaw  
Mr. & Mrs. Ronald D. Street  
Lauragene & Don Swenson  
Mrs. Audrey I. Thompson

**ARBORETUM LIBRARY**  
Mr. John Carlton  
& Mrs. Nancy Carlton  
in memory of Margaret Byrne  
The Good Family Foundation  
Ms. Rayma Harrison  
Mr. Richard Schulhof  
& Ms. Sandra Goodenough

**CELEBRATION GARDEN**  
Carl and Henrietta Herrmann  
Family Foundation

**COMMUNITY PROGRAMS**  
Wells Fargo Foundation

**CULTURAL LANDSCAPE  
REPORT AND TREATMENT  
PLAN**  
Dextra Baldwin McGonagle  
Foundation

**EDUCATIONAL  
PROGRAMMING**  
Mr. & Mrs. Ben Garrett  
Ms. Gale Kohl  
Ms. Joanne E. Sanders  
Nancy Yoshihara

**ROOTS & SHOOTS**  
Georgina Fredrick Children's  
Foundation  
Pasadena Community Gardens  
Conservancy

**EVENTS**  
**FORCES OF NATURE**  
Ms. Leigh Adams  
Mr. Jon Applegarth  
Ms. Barbara Aran  
Mr. & Mrs. George Ball  
Robert & Jill Bell  
Mr. & Mrs. James S. Bennett  
Mr. Dean Billman  
Mr. Richard Brand  
Mr. James Burr  
& Mrs. Kathleen Burr  
Ms. Lillian Burrow  
Ms. Angie Chen  
Mr. & Mrs. Mel Cohen  
Ms. Shannon Cohen  
Mr. & Mrs. Carl Cooper  
Mr. & Mrs. Steven M. Craig  
Ms. Kristin L. Creighton  
Mr. & Mrs. Scott Cunningham  
Mrs. Mary Davis & Mr. Dale Davis  
Ms. Annie Debijl  
Ms. Ann Dove  
Mr. & Mrs. Ron Downs  
Joe & Diana Eisele  
Mrs. Judith Epley  
Dr. & Mrs. Lincoln Fairchild  
Alan Auto Glass  
Ms. Ivonne Flint  
Mr. & Mrs. Dan Foliart  
Ms. Jessica Goeller  
Mrs. George C. Good  
Ms. Karyn Grasse  
Mr. & Mrs. Frank Griffith  
Mr. Bradley Hand  
& Ms. Mary VanCott-Hand  
Mr. Manuel Henderman  
Mr. James E. Henrich  
Mr. Gerald Hermanson  
Mr. & Mrs. John Higuchi  
Bev Huntsberger  
Ms. Julie Jackson  
Mrs. Elliott D. Jones  
Mr. & Mrs. Michael Kaiser  
Mr. & Mrs. H. Clay "Hap" Kellogg

Harvest Kloster & Edward Kloster  
Mr. Ronald Lanyi  
& Mrs. Ming Dai  
G. Larkin  
Mr. & Mrs. Gray B. Larkum  
Mr. & Mrs. William Lincoln  
Mr. James Litm  
Ms. Rose O. Lizzcano  
Ms. Rosie Mares  
& Ms. Patricia Mares  
Mr. Noel McCarthy  
Mr. & Mrs. William F. McDonald  
Mr. Frank McDonough  
Ms. Joya Melissa  
Ms. Marilyn Miller  
Mr. & Mrs. Philip Miller  
Mrs. Jill Morganelli  
Mr. James Nailor  
& Mr. Salomon Hernandez  
Mr. & Mrs. Robert E. Novell  
Joyce H. Olin  
Mr. Eric Olsen  
Mr. Carlos Padilla & Ms. Aleia Long  
Mr. & Mrs. Anthony Parrille  
Mr. & Mrs. Robert Perez  
Mr. Timothy Phillips  
Peg & Lee Rahn  
Mr. & Mrs. Charles Read  
Mr. & Mrs. Gilbert N. Resendez  
Mr. & Mrs. Jim Rice  
Rosemary S. Risley  
Mr. Ramon Rodriguez  
Mr. Guillermo Sandoval  
& Ms. Elvia De La Cruz  
Mr. Richard Schulhof  
& Ms. Sandra Goodenough  
Mr. Jeff Sease & Mrs. Robin Sease  
Mr. & Mrs. Bruce K. Seidel  
Mr. & Mrs. Joel Sheldon  
Ms. Cynthia Shilkret  
Mr. Nicholas Staddon  
Mr. & Ms. Richard Stuebe  
Ms. Pat Sullivan  
Ms. Drusie Taylor  
Mr. Randall Townsend  
& Ms. Karen Mitchell  
Ms. MaryAnn Ur  
Mr. Edward Watson  
& Ms. Pamela Warner

Mr. & Mrs. Vern Whitaker  
Mr. & Mrs. Jeff Williams  
Mr. Stephen Woodruff  
Mr. David Wright  
Nancy Yoshihara  
Mr. Mike Zika

**ORCHID EVENING**  
Mr. Edward Watson  
& Ms. Pamela Warner  
Mr. & Mrs. Ron Downs

**ARBORETUM TREE FUND**  
Mr. William Collister  
& Mrs. Dorothy Collister  
Mr. & Mrs. Ben Garrett  
Mrs. Kathleen L. Henrich  
Mrs. Shake Mamigonian in memory  
of James Brownfield  
Mr. & Mrs. Edward Simpson  
Mr. William Wilk  
Year Around Garden Club

**NEW ENTRANCE  
INCLUDING PLEDGES**  
Mr. & Mrs. George Ball  
Mr. & Mrs. James I. Bang  
Mr. & Mrs. George A. Brumder  
Ms. Kristin L. Creighton  
Mr. & Mrs. Joe Eisele  
Mr. & Mrs. Dan Foliart  
Dr. & Mrs. Kenneth D. Hill



#### SAMUEL AYRES SOCIETY

You can create financial advantages for you and your family by making a planned gift that includes the Los Angeles Arboretum Foundation, a tax-exempt non-profit. By notifying us that you are including the Arboretum in your estate gift planning through a simple will, life insurance or trust, you will become a member of the Samuel Ayres Society. For more information, please call Rick Larkin at 626-821-3232 or [rick.larkin@arboretum.org](mailto:rick.larkin@arboretum.org)

Mr. & Mrs. H. Clay "Hap" Kellogg  
Susan & Doug Kranwinkle  
Phaedra & Mark Ledbetter  
Mr. & Mrs. William Lincoln  
Mr. & Mrs. William F. McDonald  
Mr. & Mrs. Philip Miller  
Dr. & Mrs. G. Arnold Mulder  
Donivee & Merrill Nash  
Mr. & Mrs. Gilbert N. Resendez  
Mrs. Emily Rosedale-Kousoulis  
& Mr. Nick Kousoulis

Mr. Richard Schulhof  
& Ms. Sandra Goodenough  
Mr. & Mrs. Timothy Shea  
Mr. & Mrs. Gary Thomas

*The Arboretum appreciates your support. Listed here are donations received between December 1, 2012 – May 31, 2013. Benefactors are categorized based on cumulative giving for the 2012-2013 year. Please call the Development Office at 626-821-3237 and let us know if we inadvertently misspelled or omitted your name.*



VISIT [WWW.ARBORETUM.ORG](http://WWW.ARBORETUM.ORG) FOR A LISTING OF THE LATEST NEWS AND EVENTS AT THE ARBORETUM.



## CALIFORNIA NATIVE PLANTS AVAILABLE AT THE GIFT SHOP

OPEN DAILY FROM 9AM - 4:30PM

The plants are supplied by the Theodore Payne Foundation, which promotes the understanding, use and preservation of California native plants.

*Members of the Arboretum receive a 10% discount.*

### GET INVOLVED

Volunteers provide hospitality, information and support staff in all areas of the garden. For more information about becoming a volunteer, contact Nancy Carlton at 626-802-8471 or [nancy.carlton@arboretum.org](mailto:nancy.carlton@arboretum.org).

### BECOME A DOCENT

No experience is necessary—just enthusiasm for plants, history and an eagerness to learn and share the knowledge. Docents are needed to lead both adult and school tours. As a docent, you will spend time learning about the Arboretum's collections and local California history. Becoming a docent is a great way to meet new friends and become an integral part of the garden.

### GETTING HERE

The Arboretum is located in the city of Arcadia, just 2 miles east of Pasadena. Exit off the 210 Freeway on Baldwin Avenue and travel south. We are also accessible by Metro ([www.metro.net](http://www.metro.net)). Bicycle racks are available in the parking lot. Parking is free. Handicapped parking is available.

### PEACOCK CAFÉ

Tuesday – Sunday; 9am–4:30pm

The Fresh Gourmet staffs the Peacock Café and offers a varied selection of gourmet sandwiches, wraps, salads and special items from the grill. No picnics are allowed on the Arboretum grounds, but picnic tables are available outside the main entrance. For large parties and catering, call 626-446-2248.

### HOURS AND ADMISSION

Open daily from 9am–4:30pm (Members enter at 8am)

\$9 General Admission; Members Free

\$6 Seniors, Full-time students

\$4 Children 5–12

\$5 Tram Ride (weekends only)



*This publication is printed on  
environmentally responsible,  
FSC Certified paper.*