



*Exploring the*

# ARBORETUM

MAGAZINE FOR THE MEMBERS OF THE LOS ANGELES COUNTY ARBORETUM AND BOTANIC GARDEN

WINTER/SPRING 2018

## **Tarzan & Jane**

*On location at the Arboretum*

## **Wild Camellias**

*As found in nature*

## **Forest Bathing**

*Awaken the senses Japanese style*





## BEYOND TARZAN



**I**F I HAD TO CHOOSE TWO VISITORS WHO WOULD come and never leave, Tarzan and Jane would be the perfect choice. Boundless and fearless in their love of the “jungle”, a.k.a the Arboretum, they will be with us forever.

That the Tarzan franchise enjoyed such a long run in our landscape is just one chapter in a remarkably rich past. Perhaps like no other California garden, the Arboretum embraces the broad swath of history that helps make us who we are.

Linda Dishman, CEO of the Los Angeles Conservancy, spoke kindly at our annual Members Meeting this past

September. Earlier this year, the Arboretum received the Conservancy’s Royce Neuschatz Preservation Award for Historic Landscapes. In her remarks, Linda recognized the Arboretum’s singular cultural significance; I cannot improve on her words:

“The Arboretum is a microcosm of L.A. history; it is about land, people, buildings, plants and peacocks! In my many years of preservation, I have seen many sites, but I have to say that the Arboretum is one of the most layered and interesting places that I’ve experienced.

“Something here captures you. Thousands come to learn about plants, enjoy concerts, and even get married, talk about making history! As Arboretum members, you support efforts to preserve this place and expand the number of people who value it. Thank you for making sure our past is part of our future.”

I join Linda in expressing my deep thanks for your support in preserving the Arboretum’s natural and cultural treasures. From the upcoming event celebrating Hollywood at the Arboretum, to extensive new tree plantings and the coming restoration of the Reid-Baldwin Adobe, the past 10 years have been a time of unprecedented progress in celebrating and renewing our heritage. Simply put, you, our members, have enabled the Arboretum to flourish like never before.

With my great appreciation and all best wishes for the new year. —*Richard Schulhof, CEO*

## THE LOS ANGELES ARBORETUM FOUNDATION

*Founded in 1948, the Foundation has provided new gardens, extensive education programs, and publications serving Southern California. Today, the Foundation leads a broad community of members, volunteers and donors in establishing the support needed to realize the Arboretum’s potential as a premier public garden and educational resource.*

### 2018 BOARD OF TRUSTEES

#### President

Dan Folliart

#### Vice President

Leelee Clement Doughty

#### Treasurer

William Lincoln

#### Secretary

Robert Barnes

Dana M. Baldwin, PhD

George Ball

Sean Cain

Connie Ching, PharmaD

Elizabeth Debreu

Kathleen Ellison

Diane Grohulski

Andrew Hoag

Karen Snider Houghton

H. Clay “Hap” Kellogg IV

Susan Kranwinkle

Mark Ledbetter

Annette Castro Ramirez

Midori Katsura Resler

Emily Rosedale-Kousoulis

Charles L. Seitz, PhD

Mario Tse, DDS

Betsey Tyler

Pamela Warner

Robert E. Willett

#### Honorary Trustees

George A. Brumder

Burks L. Hamner

Kenneth D. Hill, PhD

G. Arnold Mulder, MD

Gilbert N. Resendez

General Information..... 626.821.3222  
 Membership..... 626.821.3233  
 Development..... 626.821.3237  
 Arboretum Library ..... 626.821.3213  
 Plant Information Hotline ..... 626.821.3239  
 Garden & Gift Shop..... 626.447.8751

Peacock Café..... 626.446.2248  
 Site Rentals..... 626.821.3204  
 Class Registration..... 626.821.4623  
 Weddings..... 626.821.3211  
 Wedding Photography..... 626.821.3244



# Exploring the ARBORETUM

WINTER/SPRING 2018

MAGAZINE FOR THE MEMBERS OF THE LOS ANGELES COUNTY ARBORETUM AND BOTANIC GARDEN

## 4 News & Highlights

A new art exhibit in the Library, history talks, a journey to India on Peacock Day and more

## 8 Hollywood calling

Tarzan found an ideal jungle in the wilds of the Arboretum.

## 10 Why did he do it?

Tampering with the classic *English Botany* book series

## 11 Awaken your senses

Experience forest bathing

## 14 January to June Calendar

Events and classes

## 20 Community

The Radelet family  
Lucky Baldwin Poker Tournament

## 21 Donors

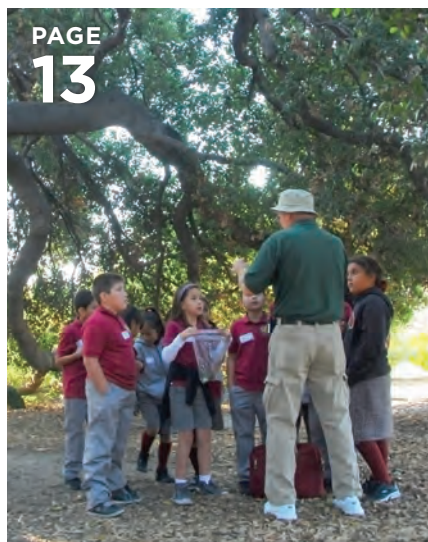
Thank you to our supporters



PAGE  
6

### NATURAL CAMELLIAS

The delicate *Camellia azalea*, above, rivals today's showy hybrids.



PAGE  
13

### EDUCATING KIDS

A new science program about nature is in the works.

#### On the cover:

Johnny Weissmuller as Tarzan and Brenda Joyce as Jane. Photo courtesy of Edgar Rice Burroughs Inc.

#### Masthead

EDITOR: Nancy Yoshihara  
ART DIRECTOR: Carol Wakano

This is a publication of the Los Angeles Arboretum Foundation. The Los Angeles County Arboretum and Botanic Garden is governed through a private-public collaboration between the Foundation and the County of Los Angeles through its Parks and Recreation Department.



## A NEW ART EXHIBITION

## the naturalist's desk: language + landscape

Mountain aloe (*Aloe marlothii*) archival pigment print

**T**HE ART AND TEXT installations by Pamela Burgess explore the concept and meaning of landscape as seen through a personal lens.

Installed throughout the Arboretum Library, the show features a range of work in various media including drawings and poetry, sculpture and photography, and samples of found roots and seeds from the artist's collection of odd nature.

The show, which opens January 27, is divided into several sections, each one featuring a different kind of landscape that includes selections from the Arboretum Library's extensive collection of botani-

cal books, artwork based on specimens growing in the Arboretum, and collaborations among Librarian Susan Eubank, Curator of Living Collections James E. Henrich and the artist. A map and self-guided tour of the exhibition will be available for visitors.

Known for her ephemeral outdoor tapestry installations, Pamela has always been fascinated with nature and its materials. Her work is focused not on the horizon or long view, but on the details of a landscape—fragile plant material. The transitory nature of life is the underlying theme of her work, which she will discuss **Saturday, January 27, at 3pm** in the Library.

## IT'S BACK! January is Member Appreciation Month

**O**UR MONTH-LONG member celebration returns with special offers to thank you for being Arboretum members and supporters. All members will enjoy:

► Double discount on regular-priced merchandise

at the Gift Shop, January 13 and 14 (excludes food and drink items).

► A complimentary tram tour January 13 with our Plant Information Specialist at 10am and 11am; reservations required.

► Members' Celebration Day in the Library, January 13 from 9am-12pm; enjoy crafts, a scavenger hunt, treats, beverages and music.

For members who join, renew, give a gift membership or renew early during January, you will receive a free Arboretum gift while

supplies last. You also will be automatically entered in the following:

► Weekly opportunity drawings with prizes, including Arboretum perks, restaurant and retail gift cards, and more.

► A special Arboretum Grand Prize drawing.

Please use the form on page 23 to join, renew, and/or purchase a gift membership. For more information or questions, please call 626.821.3233 or visit [arboretum.org](http://arboretum.org).

## HISTORY LIVE AT THE LIBRARY

*In a series of talks, Mitchell Hearn's Bishop, Curator of Historical Collections, will present:*

### Early Photographs of Rancho Santa Anita

**January 7, 1-2 pm**

A review beginning with the earliest known photographs in the Arboretum Collections by Carleton Watkins.

### Capability Brown and Humphry Repton

**March 4, 1-2pm**

The work of these two supremely important landscape architects will be discussed, focusing on rare books and archival material.

### Baldwin M. Baldwin's Papers

**May 13, 1-2pm**

The papers of the grandson of Elias J. "Lucky" Baldwin include rare letters of his mother Anita Baldwin, who left instructions that her personal papers be destroyed after her death.

## Tomato talk kicks off Spring Plant Sale

MARK YOUR CALENDAR for our popular tomato talk and spring plant sale on **Friday & Saturday, March 23 & 24, 9am-4:30pm**. Rebecca & Matt-Dell Tufenkian will present the tomato talk at 10am on Friday, March 23, to kick off our members preview day. Tomato and other plants will be available for purchase following their talk. Christine Anthony of Renee's Garden will be the featured speaker on Saturday, March 24 at 10am. The talks are free for members; regular admission applies for non-members. The Library will be selling used garden and plant books.





## Peacock Day: Journey to India

**SATURDAY, MARCH 24, 10AM-3PM, INCLUDED IN ADMISSION; MEMBERS FREE**

**Peacocks have been** admired for thousands of years, particularly the blue Indian species, which has made a home at the Arboretum. They are descendants of several pairs of peafowl brought from India by Elias J. “Lucky” Baldwin in the late 1800s. To honor our peacock connection with India, we take a cultural journey to that country on Peacock Day. Enjoy performances of Indian classical and folk dances, arts,

crafts, and photo and henna booths. Other activities include informative walking tours about peacocks, story time and a peacock costume parade for children. Peacock Day is organized in collaboration with the Hindu Temple Heritage Foundation, a non-profit organization devoted to preserving and promoting the rich heritage of Indian culture. Join us for Peacock Day and take home a little bit of India.

### SAVE THE DATE

#### Arboretum Summer Nights

Mark your calendar for the first of our popular Friday night summer concerts, which begin **June 15 & 29**. Add these dates too for our continuing concert series: **July 6 & 27**. Performers and details will be available soon at [arboretum.org](http://arboretum.org).

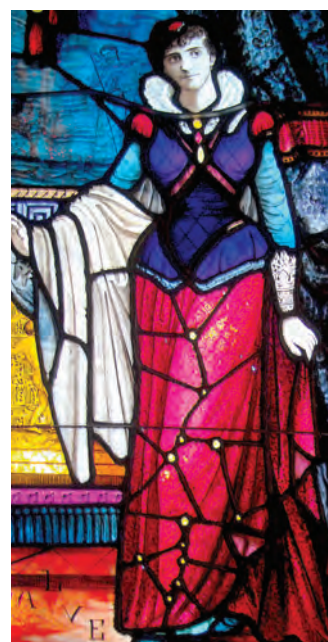
#### Party in the Stacks Library Benefit and Used Book Sale Preview

**Friday, May 4; 6:30-9pm**  
Gather for our one-night of Library revelry and enjoy music, dancing, food and drink, as well as an opportunity to see extensive mid-century modern book, magazine and slide collections within the Library. You'll also have the first opportunity to purchase at the used book sale. Members of the Arboretum, local plant societies, library organizations and other botanic gardens are welcomed at our member price for the event. Pre-event tickets are \$15 for members of the above organizations and \$20 for non-members. Tickets at the door will be \$20 for members; \$25 non-members.

## WHO IS THIS LADY IN THE QUEEN ANNE COTTAGE?

**E**LIAS J. “LUCKY” Baldwin’s Queen Anne Cottage was constructed in 1885-86 for his new wife Lillie Bennett, the 16-year-old daughter of architect Albert A. Bennett who designed the cottage. Soon after the couple separated, Baldwin turned the fanciful house into a memorial to his third wife, Jennie Dexter who died in 1881. A stained glass portrait of Jennie in the front door welcomed visitors and an almost life-size oil paint-

ing of her was hung in the Cottage parlor. Both items remain today and can be viewed during tours of the Queen Anne Cottage on **Sunday, May 20, 10am-3pm**. Regular admission applies; tour fee: \$3 members; \$5 general public; \$3 children 12 and older; under 11 free. Proceeds benefit restoration projects at the Cottage, which is listed on the National Register of Historic Places. The cottage is open to the public only twice a year.



### THE PASADENA POPS RETURNS

*The orchestra, led by conductor Michael Feinstein, begins its 2018 summer concert series on **Saturday, June 23**. Arboretum members receive 10% off regular ticket prices. For details and tickets, visit [pasadenasympphony-pops.org](http://pasadenasympphony-pops.org).*

#### That's Entertainment: Gershwin to Sondheim

**June 23**

Michael Feinstein, conductor

#### Summer of Love: Michael Feinstein Sings the Hits of the 60s

**July 21**

Larry Blank, conductor

#### Classical Mystery Tour: Music of the Beatles

**August 4**

Larry Black, conductor

#### Bernstein at 100!

**August 18**

Michael Feinstein, conductor

#### Broadway at the Movies

**September 8**

Michael Feinstein, conductor



# Wild Camellias

As found in nature, they bear simple, delicate flowers with ornamental features, many of which are not present in the more robust, showy, modern-day hybrids. **By JAMES E. HENRICH**

**T**HE ARBORETUM historically had a significant collection of *Camellia* species and made important contributions to plant breeding and introductions in Southern California from 1957 to 1991. Last spring, we acquired and planted 67 species of camellias to restore the collection's diversity and preserve the species in cultivation.

The plants, generously donated by Tom Nuccio (Nuccio's Nurseries, Altadena), were placed in the Asia/North Temperate area near the Meyberg Waterfall. They were among the first significant infusion of plants in this area in many years. The natives of these newly added species range from Nepal to China to Indonesia. Their habitats include deciduous and evergreen forests, thickets, and thickets along rivers/riverbanks at 330-10,500 feet. While most grow in acidic soil, some grow in forested, calcareous hills.

We are most familiar with the characteristics of camellia hybrids derived from *Camellia japonica*, *C. reticulata* and *C. sasanqua*. However, *Camellia* species are fascinating because they

have myriad diverse morphological characteristics. Yet, they all share basic floral structure that makes them *Camellia*—stamens numerous in 2-6 whorls, outer whorl generally forming a tube and fused to the petals, ovary superior, 3-5 seed chambers, cotyledons fully developed and fleshy with high oil content, and absent of stored food.

The species have: growth habits as evergreen shrubs or small trees, rarely large trees; leaf shapes ranging from ovate to lanceolate; leaf surfaces smooth to rugose, or having depressed or raised veins on the upper surface; leaf tips rounded, narrowly pointed, to having a tail-like appendage; leaf margins entire to serrate; leaves ranging from 1-5 inches wide and 1-11.5 inches long; young branchlets glabrous to covered with long rigid hairs; flowers sessile to stalked; petals 5-8(12), no double flowers as we see in hybrids; flower color in shades of red, white or yellow; and flowers 0.5-4 inches in diameter; many are fragrant.

The tea family (Theaceae) contains 28 genera and 520 species. Among them, the *Camellia* genus contains 100-300 species (depending upon

the taxonomic authority), 97 occur in China alone, of which 76 are endemic. And, more than 20,000 named cultivars are known. The International Camellia Species Garden in China is dedicated to collecting, conserving and breeding *Camellia* species. The only related genera native to the United States are *Franklinia*, *Gordonia* and *Stewartia*. Tea, camellia oil and ornamental plants are significant commercial products from camellias.

The site where you'll see our new camellias has high deciduous tree canopy and the soil is friable sandy loam—ideal for these plants. The watering regimen was twice weekly through October, then once weekly depending upon precipitation and retained soil moisture. The plants are mostly 1-2 feet tall currently. All initiated new growth and most developed flower buds. *Camellia azalea* flowered in June and the fall-flowering species began blooming in mid-October. They will become mounding to erect shrubs or small trees. Please enjoy this collection as it grows and matures.

.....  
*James E. Henrich is Curator of Living Collections at the Arboretum.*



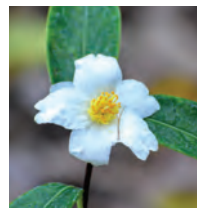
***Camellia oleifera***  
Shrubs or trees, 3-15 (-24) feet tall; flowers solitary or paired, white, 1.6-2.4 inches in diameter, petal apex notched; forests/thickets.



***Camellia cordifolia***  
Shrubs/trees, 3-26 feet tall; flowers solitary, downward facing, white, 0.75-1.0 inch in diameter; forests, thickets.



***Camellia brevistyla***  
Shrub 3-11.5 feet tall, rarely trees; flowers solitary, white or pink, 0.6-1.2 inches in diameter; forests, thickets.



***Camellia fluviatilis***  
Shrub 5-11.5 feet tall; flowers solitary, white, 0.6-2.4 inches in diameter; forests, thickets along valleys.



***Camellia azalea***  
Shrub 3-7.5 feet tall; flowers solitary to clustered, roseate, 3-4 inches in diameter; forests in hilly areas, among boulders by rivers.



***Camellia rhytidocarpa***  
Shrubs or trees, 10-33 feet tall; flowers axillary or subterminal, solitary or paired, white to blush pink, 1-1.6 inches in diameter; bracts brown and dry; forests.

**Southern California Camellia Show** Saturday, January 20; 1-5pm, Sunday, January 21; 9am-4:30pm, Included in admission; members free. The Southern California Camellia Society presents hundreds of camellia blooms representing all the varieties that you may see around Southern California at this time of year. For more details, visit [socalcamelliasociety.org](http://socalcamelliasociety.org).



This late 1880 botanical illustration of *Camellia thea*, the tea plant (now named *Camellia sinensis*), features the following: (1) flower in vertical section; (2) stamen; (3) ovary in cross section; (4) pistil with calyx; (5) fruit viewed from top showing seeds; (6) fruit underside; (7) seed; (8) seed in cross section; (9) embryo.



# TARZAN RETURNS

The garden has a long and storied history with the Tarzan film franchise as a stand-in for the wilds of Africa in a dozen of the 52 authorized films about the jungle hero. *By* SCOTT TRACY GRIFFIN



Recognize the Arboretum in the scenes, above and opposite, from the 1945 film *Tarzan and the Amazons*? Cheetah, the ape-man's popular chimpanzee, didn't get a credit in the film's poster, right. The Tarzan film saga all began with the 1918 silent film *Tarzan of the Apes*, far right, which was an immediate and huge box office hit.

ONE HUNDRED YEARS AGO on January 27, 1918, Tarzan went to the movies for the first time. He made his film debut in the silent movie, *Tarzan of the Apes*, which was a huge hit with \$1 million in the box office receipts. The film, based on a story by Edgar Rice Burroughs originally published in the October 1912 pulp magazine *The All-Story*, was followed by 52 authorized Tarzan movies and 24 novels.

To mark the centennial of the Tarzan filmography, the Arboretum will celebrate its own long and storied history with the film franchise on June 30 where I will share a behind-the-scenes look at Tarzan movie making at the Arboretum, the jungle location site for 12 of those 52 authorized films.

The first silent movie, starring Elmo Lincoln and Enid Markey, was filmed in the swamps of Louisiana, and in Hollywood at Griffith Park, the old Selig Zoo,

and the E & R Jungle Film Company.

A series of six films by Metro-Goldwyn-Mayer, starring Johnny Weissmuller and Maureen O'Sullivan, cemented the ape-man's status as a cultural icon in the 1930s and '40s. The movie, *Tarzan Escapes*, was the first to film on the grounds of the Lucky Baldwin estate, before it became the Arboretum.

When MGM declined to renew its contract, independent producer Sol



# *to the* ARBORETUM



## Filmed at the Arboretum

*Tarzan Escapes* (1936)  
*Tarzan Triumphs* (1943)  
*Tarzan's Desert Mystery* (1943)  
*Tarzan and the Amazons* (1945)  
*Tarzan and the Leopard Woman* (1946)  
*Tarzan and the Huntress* (1947)  
*Tarzan's Magic Fountain* (1950)  
*Tarzan and the Slave Girl* (1950)  
*Tarzan's Peril* (1951)  
*Tarzan's Savage Fury* (1952)  
*Tarzan and the She-Devil* (1953)  
*Tarzan's Hidden Jungle* (1955)



## Tarzan Returns

Saturday, June 30

Please join us as we celebrate a day of Hollywood history and jungle fun, 10am-3pm. Enjoy classic Tarzan movies, exhibits of film posters and comic books and a behind-the-scenes look at Tarzan movie making on location at the Arboretum. Children will enjoy jungle crafts, a scavenger hunt and banana bar. For details see page 19.



Lesser signed a deal with author Burroughs to continue the series with Weissmuller and Johnny Sheffield, who played Boy. Brenda Joyce eventually replaced O'Sullivan as the ape-man's mate.

Lacking access to MGM's jungle backlot, Lesser decided that the Arboretum was the ideal stand-in for Africa in evocatively titled films like *Tarzan and the Amazons*, *Tarzan and the Leopard Woman*, and *Tarzan and the*

*Huntress*. Weissmuller donned the loincloth six more times for Lesser, before retiring to play comic-strip hero Jungle Jim. Lex Barker assumed the lead role of Tarzan for five films shot partially at the Arboretum (with a different actress portraying Jane in each) before muscleman Gordon Scott was hired in 1954.

*Tarzan's Hidden Jungle*, starring Scott in 1955, was the final Tarzan movie filmed at the Arboretum, as

advances in technology and transportation made filming in locales like Africa, India, Thailand and Brazil an affordable proposition. This marked the end of an era for shooting Tarzan on location in Southern California.

*Scott Tracy Griffin, author of Tarzan on Film (Titan Books 2016) and Tarzan: the Centennial Celebration (Titan Books, 2012), is Director of Special Projects for Edgar Rice Burroughs, Inc. in Tarzana.*

# A revisionist classic, *English Botany*, unbound

By ELLEN ELLICKSON

**N**ESTLED IN THE LIBRARY'S rare book collection is a 24-volume version of *English Botany, or Coloured Figures of British Plants, With Their Essential Characters, Synonyms and Places of Growth*. Originally published between 1791 and 1814 in 36 volumes, it contained 2,592 hand-colored copper-plate engravings by James Sowerby (1757-1822), each accompanied by a page of text by James Edward Smith (1759-1828).

Smith, the founder of the Linnean Society of London, stated in his preface that he classified the plants according to the *Species Plantarum* of Linnaeus as well as other recently published floras. He wrote that he "will spare no pains to have his botanical characters and synonyms accurate," and he hoped the reader will approve.

George Edward Frere (1807-1887), the owner of the Library copy of *English Botany*, disagreed with many of Smith's choices to the extent that he had his 36 volumes disbound and reassembled into 24 of his own arrangement. He also had additional blank pages bound in to provide space for his own commentary.

Frere, a barrister, was an avid amateur botanist and also a Fellow of



the Royal Society, an honor granted to those who were judged to have made a "substantial contribution to the improvement of natural knowledge." His was a time of widespread and enthusiastic interest in botany as well as botanical taxonomy.

His text includes extensive annotations including cross-outs and re-naming of Latin names as well as the re-numbering of plants to match his rearranging scheme. Newspaper clippings, advertisements and letters

are bound in or laid in, and some pressed specimens are present as well. The letters include one from Sir William Jackson Hooker (1785-1865), a systematic botanist and director of the Royal Botanic Gardens at Kew, and others from George B. Wollaston, an expert on British ferns.

To see our *English Botany*, contact Arboretum Librarian Susan Eubank at [susan.eubank@arboretum.org](mailto:susan.eubank@arboretum.org).

Ellen Ellickson catalogs our rare books.

## Landscape: Natural, Urban and Imagined, A Poetry Event

Saturday, February 24, 2-3:30 pm, included in admission; members free

Suzanne Lummis, poet and editor of the anthology *Wide Awake: Poets of Los Angeles and Beyond*, will lead a discussion and poetry reading with four of L.A.'s most distinctive and popular writers and performers. Brendan Constantine, Mary-Alice Daniel, Nicelle Davis and Olga García Echeverría, will create poems inspired by their visits to the Arboretum and in exploration of the themes of natural, urban and imagined landscapes.



**Brendan Constantine** has had poetry published in several poetry journals and recently authored the books *Calamity Joe* and *Dementia, My Darling*. He is a popular performer who has presented his work throughout the U.S. and Europe as well as on NPR.



The work of **Mary-Alice Daniel**, born in Nigeria, raised in England and Tennessee and now living in Los Angeles, has appeared in several poetry journals. She is currently an Annenberg Fellow in USC's PhD program in creative writing.



**Nicelle Davis'** collections include *The Walled Wife*, *In the Circus of You*, *Becoming Judas* and *Circe*. She is the creator of The Poetry Circus.



**Olga García Echeverría** is the author of *Falling Angels: Cuentos y Poemas*. She has been an educator for over 20 years and is currently teaching literature at Cal State University Los Angeles.



Immerse yourself under one of the Arboretum's many green canopies like the bamboo grove.

## Forest Bathing Experience the Essence of Nature

De-stressing with the Japanese practice of *shinrin-yoku* by TED TEGART

**W**HEN I WAS INVITED TO MY FIRST forest bathing session, I wasn't sure what to expect. I knew it was a guided walk along trails and under forest canopies at the Arboretum. What I learned was, even though I work at the Arboretum every day, I wasn't actually connecting with nature.

Because of my familiarity with the grounds, I wasn't appreciating what they had to offer. Our guides, Ben Page and Jackie Kuang, took us through a series of guided invitations to assist us in finding our own way of interacting with the garden. They encouraged us to slow down, open up our senses and take it all in.

Two hours later I felt deeply relaxed by the experience. I connected with nature in a manner that was surprisingly introspective and self-illuminating. The feeling was so different from the rush of a rigorous hike or the note taking frenzy of an informational nature walk.

That is the goal of the Japanese practice of *shinrin-yoku* which means "taking in the forest atmosphere" or "forest bathing." In 1982, the Japanese Ministry of Agriculture, Forestry

& Fisheries began a program to help the nation's harried citizens relax and to preserve Japan's vast forests. Through the years, research there has shown that forest bathing reduces stress and blood pressure, and bolsters the immune system.

Research in the United States and elsewhere has shown the physiological and psychological benefits of humans having close encounters with nature. Florence Williams describes the restorative effects in her book, *The Nature Fix, Why Nature Makes Us Happier, Healthier, and More Creative*.

In January, the Arboretum will add forest bathing (details right) to its Health & Wellness programs. Ben, founder of Shinrin-yoku LA and a certified forest therapy guide, will lead the walks with Jackie, also a certified forest therapy guide who speaks Mandarin. Make forest bathing a new experience for you in 2018. You'll discover a new kind, and way, of being in nature.

.....  
*Ted Tegart is Education Manager at the Arboretum.*

### Try it, you will feel refreshed

**8-10am, \$25 per class members; \$35 non-members, January 20, February 17, March 17, April 21, May 19, June 16**  
*Guides: Ben Page, Jackie Kuang*

ON YOUR WALK WITH A certified guide, discover your own authentic way of interacting with nature at the Arboretum. There's no right or wrong way to forest bathe and it's great for all ages; just come and be yourself. Following the walk enjoy a tea ceremony featuring tea made from plants foraged on-site and some healthy snacks.



# Outdoors at Nature Camp



Imagine your child spending this spring or summer break exploring the lush gardens of the Arboretum, discovering the awesomeness of nature, and having some old-fashioned fun outdoors. Nature Camp offers all this and more at one of Southern California's most celebrated gardens. All activities are led by instructors and guided by counselors. Weekly sessions of Nature Camp are offered in the spring and summer, Monday through Friday for children ages 5-11. *Registration is now open for spring and summer sessions. Please call 626.821.4623 to register. For more information, contact Chris Orosz at 626.821.5897.*

## SPRING NATURE CAMP

SESSION 1: MARCH 19-23

SESSION 2: APRIL 2-6



### FULL DAY

9am-3:30pm

\$325 members per session

\$360 non-members per session

10% sibling discount

T-shirt included

## SUMMER NATURE CAMP

SESSION 1: JUNE 4-8

SESSION 2: JUNE 11-15

SESSION 3: JUNE 18-22

SESSION 4: JUNE 25-29

**HOLIDAY BREAK: JULY 2-JULY 6**

SESSION 5: JULY 9-13

SESSION 6: JULY 16-20

SESSION 7: JULY 23-27

SESSION 8: JULY 30-AUGUST 3

SESSION 9: AUGUST 6-10

### HALF DAY

9am-12pm; 12:30-3:30pm

\$165 members per session

\$180 non-members per session

10% sibling discount

T-shirt included

### DAILY

\$70 members per day

\$75 non-members per day

**EXTENDED CARE:** Mornings 8-9am: \$25 members; \$30 non-members; Afternoons 3:30-5pm: \$30 members; \$35 non-members. *For more information, please contact Chris Orosz at [Chris.Orosz@arboretum.org](mailto:Chris.Orosz@arboretum.org) or 626.821.5897. Registration for Spring Camp begins in January! Call to reserve a spot.*

## Faery Fun Time



**Saturday, April 28,**  
9:30am-12:30pm; \$10 for  
members (adults and children);  
\$15 for non-members  
(adults and children)

**The faeries encourage us** to go outdoors to rejuvenate our spirits! Join the faeries from A Faery Hunt up close in an interactive walkabout in the enchanted gardens of the Arboretum. They will bring you stories of faery magic and flowers with dancing, singing and fun. Children are encouraged to come in their favorite costume. Groups and parties are welcome. This event is amusing for the whole family, children ages 2-10 and the young at heart. Stay and have lunch at the Peacock Café for a faery-full fun day at the Arboretum. Call 626.821.4623 to purchase tickets.



# Science learning grows!

Helping schools meet new education standards *By* CHRIS OROSZ



**A**t the Arboretum we are always looking for ways to host more impactful programs for the thousands of students who visit us every school year. Last year we saw our largest number of students visiting for self-guided and guided tours with classes coming from

as far away as Northern California and Texas while on school field trips to the L.A. region. Believe it or not, we had almost 15,000 students visit! With this continually growing demand for educational programs, we have decided to expand school programs with the help of our generous donors.

The state of California is at a crossroads for science education that has given the Arboretum the unique opportunity to be a leading example in developing programs for the new state standards. If you are not a teacher, you probably are not familiar with the Next Generation Science Standards (NGSS). The NGSS were adopted by California from the federal level with the goal to better prepare students for science at the university level and the workplace. The NGSS encourage more hands-on and experiential education in the classroom so students have a better understanding of scientific concepts.

What makes our new program so groundbreaking is that it is being developed with the help of local science teachers from Pasadena, Arcadia, and Los Angeles school districts. With their feedback and input, we

will be teaching concepts that can best be taught here in the Arboretum and fill the growing need of experiential education for those students who need it most. This program will be free for local Title 1 students from 4th, 5th and 6th grade classes and our goal is to welcome 2,000-2,500 students annually. This will not only fill the need students have, but also the needs of local teachers to enrich their students' learning experience.

Our instructors will be teaching a new generation of students all about plant structures and functions, guaranteeing an appreciation and understanding of the natural world. We cannot wait to see the lasting impact this program has on our community and thank the generous donors who helped make it possible!

.....  
*Chris Orosz is School and Youth Programs Manager.*

## SPRING INTO GREEN!



### LOS ANGELES ENVIRONMENTAL EDUCATION FAIR

Saturday, March 10, 9am-3pm

Included in admission; members free

JOIN US AS FAMILIES, EDUCATORS, SCOUTING GROUPS AND students from all over the Los Angeles area come to network with local environmental community resources. You will learn about lifestyle solutions that impact the health of our planet through hands-on workshops and in-booth presentations. Other event activities include sustainable food sampling, tours, multicultural music, science scavenger hunts, art activities, eco-friendly demonstrations and nature games for all ages.





# JANUARY AT THE ARBORETUM

## EVENTS:

### FROM CAPE TO KAROO: Walking tour of South African section

**Saturday, January 6; 11am**  
*Included in admission; members free*  
Guide: Frank McDonough,  
Botanical Information Consultant  
Plants from South Africa make  
ideal additions to local gardens.

### EARLY PHOTOGRAPHS OF RANCHO SANTA ANITA

**Sunday, January 7; 1-2 pm**  
Instructor: Mitchell Hearn Bishop,  
Curator of Historical Collections  
See page 4 for details.

### BAIKO-EN BONSAI KENKYUKAI SHOW & SALE

**Saturday & Sunday,  
January 13 & 14  
10am-4:30pm**  
*Included in admission; members free*  
This is the only show of deciduous,  
miniaturized trees presented in  
the United States.

### SOUTHERN CALIFORNIA CAMELLIA SHOW

**Saturday, January 20; 1-5pm**  
**Sunday, January 21; 9am-4:30pm**  
For details see page 6.

## GARDENING

### ROSE PRUNING 101

**Saturday, January 6  
10am-12pm**  
\$25 members; \$35 non-members  
Instructor: Jill Morganelli,  
Horticultural Supervisor  
Ensure the health of roses with  
proper pruning and soil building.

### WHAT'S HAPPENING IN GARDENING

Winter Session: Thursdays.  
January 11-March 1  
9:30am-12pm  
\$140 for the series; \$25 per class  
Hosted by Matt-Dell &  
Rebecca Tufenkian  
For details visit [arboretum.org](http://arboretum.org).

### LANDSCAPING WITH TREES

**Saturday, January 13  
10am-12pm**  
\$25 members; \$35 non-members  
Instructor: Jerrold Turney  
Learn to select the perfect trees  
for your yard and care for them.

## CRESCENT FARM WORKSHOP

**Lasagna Mulching**  
**Saturday, January 20; 10am**  
*Included in admission; members free*  
Learn to use cardboard and  
mulch to build fertile soil.

## WINTER GARDEN CARE

**Saturday, January 27  
10am-12pm**  
\$25 members; \$35 non-members  
Instructor: Laramie Haynes  
Time for winter tasks such as plant  
dividing, fertilizing and mulching.

## KIDS & FAMILY

### BOOKWORMS: A STORYTELLING PROGRAM

**Could it Rain? When Water Flows**  
**Saturday, January 6**  
**Wednesdays, January 10 & 17**  
**Thursday, January 25  
10:30am**  
*Included in admission; members free*  
Children ages 3-6 enjoy nature  
stories and a take-home craft.

### FAMILY BIRD WALK

**Saturday, January 13; 8-10am;**  
\$5 general public; Arboretum and  
Audubon members free; children  
12 and under free  
Guide: Katy Mann, Pasadena  
Audubon Society  
For details visit [arboretum.org](http://arboretum.org).

## COLLECTIONS

### PLANT INFORMATION

**Wednesday, January 3; 1:30-3pm**  
*Included in admission; members free*  
Instructor: Frank McDonough,  
Botanical Information Consultant  
For details visit [arboretum.org](http://arboretum.org).

### READING THE WESTERN LANDSCAPE BOOK CLUB

**California Mexicana Missions to  
Murals by Katherine Manthorne**  
**Wednesday, January 31; 7pm;**  
Free  
Leader: Susan Eubank,  
Arboretum Librarian  
For details visit [arboretum.org](http://arboretum.org).

### SANTA ANITA DEPOT TOURS

**Tuesdays & Wednesdays  
10am-4pm**  
**Sundays, 1-4pm**  
For details visit [arboretum.org](http://arboretum.org).

### DOCENT-LED WALKING TOURS

**Tuesday-Friday, 10am**  
**Saturday, 10:30am**  
For details visit [arboretum.org](http://arboretum.org).

## ART

### CUSTOM-MADE WOODEN BLUETOOTH SPEAKERS

**Saturday, January 6; 1:30-3pm**  
*Included in admission; members free*  
Demonstrator: Bet Sharry-Veilleux  
Watch as reclaimed wood is  
transformed into speakers.

## ART WORKSHOP

**Mondays, January 8-February 26  
9:30-11:30am**  
\$40 members; \$50 non-members  
For details visit [arboretum.org](http://arboretum.org).

## LIBRARY KNITTERS & MAKERS

**Friday, January 12; 6-8pm; Free**  
A time of (botanical) inspiration  
and creativity for crafters.  
For details visit [arboretum.org](http://arboretum.org).

## OIL PAINTING CLASSES

**Saturdays, January 20-  
February 24 (both classes)**  
**Beginners: 9am-12pm**  
\$69 members; \$79 non-members  
**Intermediate-Advanced  
12:30-3:30pm**  
\$89 members; \$99 non-members  
For details visit [arboretum.org](http://arboretum.org).

## BOTANICAL ART & ILLUSTRATION

**Tuesdays, January 9, 16, 23, 30  
10am-2pm (includes lunch break)**  
\$275 members; \$295 non-members  
Instructor: Cristina Baltayan  
For details visit [arboretum.org](http://arboretum.org).

## HEALTH & WELLNESS

### TAI CHI

**Thursdays, January 25,  
February 1, 8, 15; 9-10:30am**  
\$35 members; \$45 non-members  
Instructor: Master Arnold Chien  
For details visit [arboretum.org](http://arboretum.org).

### FOREST BATHING

**Saturday, January 20**  
For details see page 11.

### YOGA IN THE GARDEN

**Tuesday evenings,  
January 2, 9, 16, 23, 30;  
5:30-6:45pm**  
\$45 members; \$55 non-members  
(5 days); \$15 drop-in per day  
**Thursday mornings,  
January 4, 11, 18, 25;  
9:30-10:45am**  
\$35 members; \$45 non-members;  
\$15 drop in, per day  
For details visit [arboretum.org](http://arboretum.org).





# FEBRUARY AT THE ARBORETUM

## EVENTS

### PACIFIC ROSE SOCIETY ANNUAL AUCTION

**Saturday, February 3; 9am-5pm**  
*Included in admission; members free*  
The annual auction offers more than 100 hard-to-find, unusual, new and direct-from-growers rose plants.

### MUSHROOM FAIR

**Sunday, February 11  
10am-4:30pm**  
*Included in admission; members free*  
Los Angeles Mycological Society (LAMS) holds its annual fair that will include demonstrations on growing, cooking and identifying mushrooms. Professional mycologist(s) will be on site.

### L.A.'S BLOOMING TREE OBSESSION

**A Walking Tour  
Saturday, February 24; 11am**  
*Included in admission; members free*  
*Guide: Frank McDonough, Botanical Information Consultant*  
Many of the colorful trees found in Southern California are here as a result of efforts by a Los Angeles dermatologist whose frequent trips to Hawaii left him longing for color.

### LANDSCAPE: NATURAL, URBAN AND IMAGINED An Arboretum Library Poetry Event

**Saturday, February 24; 2-3:30pm**  
*Included in admission; members free*  
*For details see page 10.*

## GARDENING

### WILD MUSHROOM IDENTIFICATION

**Saturday, February 3  
10am-12pm**  
*\$25 members; \$35 non-members*  
*Instructor: Dr. Jerrold Turney*  
An overview of the major genera and species of mushrooms that are common to Southern California and where they are likely to be found in this region.

### CRESCENT FARM WORKSHOP Strategies for Infiltrating Water

**Saturday, February 17; 10am**  
*Included in admission; members free*  
Learn techniques for capturing rain water to irrigate your landscape.

### RAISED BED GARDENING WITH FARMSCAPE

**Saturday, February 24  
10am-12pm**  
*\$25 members; \$35 non-members*  
*Instructor: Matthew Geldin from Farmscape*  
This workshop will cover selecting the right soil for your raised bed, manual and automatic irrigation techniques, garden planning and seasonal growing tips.

## COOKING

### HANDS-ON KOMBUCHA BREWING

**Saturday, February 10  
10am-12pm**  
*\$30 members; \$40 non-members*  
*Instructor: Brie Wakeland*  
Learn how to brew and bottle kombucha safely at home. The class will include everything you need to brew your first batch. Learn brewing methods and take-home recipes.

## KIDS & FAMILY

### BOOKWORMS: A STORYTELLING PROGRAM Who Lives in the Compost Pile? Decomposers

**Thursday, February 1  
Wednesdays, February 7 & 21  
Saturday, February 17  
10:30am**  
*Included in admission; members free*  
*For details see page 14.*

### FAMILY NIGHT HIKE ADVENTURE

**For children 7-12  
Saturday, February 3; 5:30-7pm**  
*\$10 per child members;  
\$12 per child non-members*  
Explore the Arboretum at night and learn about nocturnal animals and our night sky. Children must be accompanied by an adult

### FAMILY NIGHT HIKE ADVENTURE

**For children 6 and under  
Saturday, February 17  
5:30pm-7pm**  
*\$10 per child members;  
\$12 per child non-members*  
*See details above.*

### FAMILY BIRD WALK

**Saturday, February 10; 8-10am**  
*For details visit arboretum.org.*

## COLLECTIONS

### PLANT INFORMATION

**Wednesday, February 7  
1:30-3pm**  
*Included in admission; members free*  
*Instructor: Frank McDonough*  
*For details visit arboretum.org.*

### READING THE WESTERN LANDSCAPE BOOK CLUB *Wide Awake: Poets of Los Angeles and Beyond* edited by Suzanne Lummis

**Wednesday, February 28; 7pm**  
*Free*  
*For details visit arboretum.org.*

### SANTA ANITA DEPOT TOURS

**Tuesdays & Wednesdays  
10am-4pm; Sundays, 1-4pm**  
*For details visit arboretum.org.*

### DOCENT-LED WALKING TOURS

**Tuesday-Friday, 10am  
Saturday, 10:30am**  
*For details visit arboretum.org.*

## ART

### FROM BOUGH TO BOX, WITH THE BANDSAW

**Saturday, February 3; 1:30-3pm**  
*Included in admission; members free*  
*Demonstrator: Jeanette Gonzales*  
Learn how to create a wooden box from a solid block of found wood.

### BOTANICAL ART & ILLUSTRATION

**Tuesdays, February 6, 13, 20, 27  
10am-2pm (includes lunch break)**  
*\$275 members; \$295 non-members*  
*Instructor: Cristina Baltayan*  
*For details visit arboretum.org.*

### LIBRARY KNITTERS & MAKERS

**Friday, February 9; 6-8pm**  
*Free*  
*For details visit arboretum.org.*

## HEALTH & WELLNESS

### FOREST BATHING

**Saturday, February 17**  
*For details see page 11.*

### YOGA IN THE GARDEN

**Tuesday evenings,  
February 6, 13, 20, 27;  
5:30-6:45pm**  
**Thursday mornings,  
February 1, 8, 15, 22;  
9:30-10:45am**  
*For details visit arboretum.org.*



# MARCH AT THE ARBORETUM

## EVENTS

### MONROVIA ROCK HOUNDS SHOW & SALE

Saturday & Sunday, March 3 & 4  
9am-4:30pm

*Included in admission; members free*  
Gems, minerals, fossils, geodes  
and jewelry will be on display.

### CAPABILITY BROWN AND HUMPHRY REPTON

Sunday, March 4, 1-2pm

*For details see page 4.*

### LOS ANGELES ENVIRONMENTAL EDUCATION FAIR

Saturday, March 10; 9am-3pm

*For details see page 13.*

### IKEBANA INTERNATIONAL SHOW & SALE

Saturday, March 17; 11am-  
4:30pm

Sunday, March 18; 9:30am-4pm  
*Included in admission; members free*  
Different styles of Japanese flower  
arrangement: classical, naturalis-  
tic and avant-garde designs.

### GREAT TOMATO TALK & SPRING PLANT SALE

Friday-Saturday, March 23-24  
9am-4:30pm

*For details see page 4.*

### PEACOCK DAY

Saturday, March 24; 10am-3pm

*Included in admission; members free*  
*For details see page 5.*

### EGG-CEPTIONAL CELEBRATION

Saturday, March 31

8-9am members; 9am-12pm

*Regular admission applies*

*Activities fee:*

\$3 per child members;

\$5 per child non-members

*For details visit arboretum.org.*

## GARDENING

### TREE IDENTIFICATION

Saturday, March 3; 10am-12pm

\$25 members; \$35 non-members

*Instructor: Jerrold Turney*

Southern California has one of the  
most diverse urban forests. Learn  
about 20 species of these trees.

### WHAT'S HAPPENING IN GARDENING

Spring session: Thursdays,

March 15-May 3; 9:30am-12pm

\$140 for the series; \$25 per class

*For details visit arboretum.org.*

### CRESCENT FARM WORKSHOP Weaving

Saturday, March 17; 10am

*Included in admission; members free*

Learn to weave bio-mass (plant  
waste) into cordage, trellises,  
tomato cages and shade shelters.

## COOKING:

### FRESH: CELEBRATING THE TABLE

Wednesday, March 7; 3-5pm

*For details visit arboretum.org.*

## KIDS & FAMILY

### BOOKWORMS: A STORYTELLING PROGRAM

What's a Mushroom!

Thursday, March 1

Wednesday, March 7 & 21

Saturday, March 17

10:30am

*For details see page 14.*

### THE SCIENCE OF SEEDS! PLANTING FOR SPRING

Saturday, March 3; 10-11:30am

\$10 per child members;

\$12 per child non-members

Kids ages 6-11 learn about seeds  
and take home seeds to plant.

### FAMILY BIRD WALK

Saturday, March 10; 8-10am

*For details visit arboretum.org.*

### BUTTERFLY BRIGADE! OUR LOCAL BUTTERFLIES

Saturday, March 17; 10-11:30am

\$10 per child members; \$12 per

child non-members

Children 6-11 visit our butterfly  
hubs and take home a caterpillar!

### SPRING NATURE CAMP

Session 1: March 19-23

*For details see page 12.*

## COLLECTIONS

### PLANT INFORMATION

Wednesday, March 7; 1:30-3pm

*For details visit arboretum.org.*

### READING THE WESTERN LANDSCAPE BOOK CLUB

Ordinary Lights: A Memoir

by Tracy K. Smith

Wednesday, March 28; 7pm

*For details visit arboretum.org.*

### SANTA ANITA DEPOT TOURS

Tuesdays & Wednesdays

10am-4pm; Sundays, 1-4pm

*For details visit arboretum.org.*

### DOCENT-LED WALKING TOURS

Tuesday-Friday, 10am; Saturday,

10:30am

*For details visit arboretum.org.*

## ART

### CUSTOM WOOD SIGN MAKING

Saturday, March 3; 1:30pm-3pm

*Included in admission; members free*

*Demonstrator: Lou Barcelo*

Watch how to make a custom sign.

### OIL PAINTING CLASSES

Saturdays, March 3-April 14

Beginners: 9am-12pm

\$69 members; \$79 non-members

Intermediate to Advanced:

12:30-3:30pm

\$89 members; \$99 non-members

*For details visit arboretum.org.*

### ART WORKSHOP

Mondays, March 5-April 23

9:30-11:30am

*For details visit arboretum.org.*

### BOTANICAL ART & ILLUSTRATION

Tuesdays, March 6, 13, 20, 27

10am-2pm

*For details visit arboretum.org.*

### LIBRARY KNITTERS & MAKERS

Friday, March 9; 6-8pm

*For details visit arboretum.org.*

### NIGHT PHOTOGRAPHY

Saturday, March 17; 7:30-10pm

\$30 members; \$40 non-members

*Instructor: Frank McDonough*

Night offers unique photographic  
opportunities in the garden.

## HEALTH & WELLNESS

### TAI CHI

Thursdays, March 1, 8, 15, 22

9-10:30am

*For details visit arboretum.org.*

### YOGA IN THE GARDEN

Tuesday evenings,

March 6, 13, 20, 27; 5:30-6:45pm

Thursday mornings

March 1, 8, 15, 22, 29; 9:30-10:45am

*For details visit arboretum.org.*

### FOREST BATHING

Saturday, March 17; 8-10am

*For details see page 11.*





# APRIL AT THE ARBORETUM

## EVENTS

**AMERICAN CERAMIC SOCIETY-DC FESTIVAL AND GIFT SHOW**  
Saturday & Sunday, April 7 & 8  
9am-5pm

*Included in admission; members free*  
Southern California clay artists present unique, handcrafted work.

### FRAGRANCE SECRETS

#### Walking Tour

Saturday, April 7; 10am

*Included in admission; members free*  
Guide: Frank McDonough  
Learn about some plants that provide fragrances for perfumes.

### SANTA ANITA DERBY DAY 5K

Saturday, April 7; 8am

*Details: kinaneevents.com/*  
EVENTS/SA

### SPRING IRIS AND BULB SHOW & SALE

Saturday & Sunday, April 14 & 15;  
9:30am-4:30pm

*Included in admission; members free*  
Presented by the Southern California Iris Society and Southern California Hemerocallis & Amaryllis Society.

### SCHAS DAYLILY SHOW & SALE

Saturday, April 21; 9am-4pm

Sunday, April 22; 9am-3pm

*Included in admission; members free*  
The annual show is presented by the Southern California Hemerocallis & Amaryllis Society.

### ROSE SHOW & SALE

Saturday, April 28; 1-4pm

Sunday, April 29; 9am-2pm

*Included in admission; members free*  
The Pacific Rose Society attracts exhibitors from all over Southern California who display their roses.

### A FAERY HUNT

Saturday, April 28

9:30am-12:30pm

*\$10 members (adults and children); \$15 non-members*  
*For details see page 12.*

## COOKING

### FRESH: CELEBRATING THE TABLE

Wednesday, April 11; 3-5pm

*For details visit arboretum.org.*

### PICKLING AT HOME

Saturday, April 28

10am-12pm

*\$30 members; \$40 non-members*

*Instructor: Brie Wakeland*

Learn how to safely pickle beets and other vegetables.

## GARDENING

### INTRO TO PLANT IDENTIFICATION

Fridays, April 6, 13, 20, 27

1:30-4pm

*\$60 members; \$70 non-members*

*Instructor: Frank McDonough*

An excellent primer about plant classification and identification.

### TREE IDENTIFICATION

Saturday, April 7; 10am-12pm

*\$25 members; \$35 non-members*

*For details see page 16.*

### KEEP IT, TOSS IT OR PRUNE IT! HOW TO RENOVATE AN EXISTING GARDEN

Saturday, April 14; 10-12pm

*\$25 members; \$35 non-members*

*Instructor: Laramee Haynes*

Give your garden a makeover by choosing which plants to keep, remove and prune for a new look.

### CRESCENT FARM WORKSHOP Creating Bee Gardens and Attracting Pollinators

Saturday, April 21; 10am

*Included in admission; members free*

A guide on attracting California native bees to your garden!

## KIDS & FAMILY

### SPRING NATURE CAMP

Session 2: April 2-6

*For details see page 12.*

### BOOKWORMS: A STORYTELLING PROGRAM Who's Hiding There:

Camouflage and Mimicry

Wednesdays, April 4 & 18

Saturday, April 14

Thursday, April 26

10:30am

*For details see page 14.*

### FAMILY BIRD WALK

Saturday, April 14; 8-10am

*For details visit arboretum.org.*

## COLLECTIONS

### PLANT INFORMATION

Wednesday, April 4; 1:30-3pm

*Included in admission; members free*

*For details visit arboretum.org.*

### READING THE WESTERN LANDSCAPE BOOK CLUB

*Karl Bodmer's America Revisited:*

*Landscape Views Across Time* by

Robert M. Lindholm (images), W.

Raymond Wood (introduction),

David C. Hunt (foreword)

Wednesday, April 25; 7pm

*For details visit arboretum.org.*

### SANTA ANITA DEPOT TOURS

Tuesdays & Wednesdays

10am-4pm; Sundays, 1-4pm

*For details visit arboretum.org.*

### DOCENT-LED WALKING TOURS

Tuesday-Friday, 10am

Saturday, 10:30am

*For details visit arboretum.org.*

## ART

### BOTANICAL ART & ILLUSTRATION

Tuesdays, April 3, 10, 17, 24

10am-2pm

*For details visit arboretum.org.*

### MAKING A TOY CHEST

Saturday, April 7; 1:30-3pm

*Included in admission; members free*

*Demonstrator: Mike Ward*

Watch how to create a toy chest.

### LIBRARY KNITTERS & MAKERS

Friday, April 13; 6-8pm

*Free*

*For details visit arboretum.org.*

### NIGHT PHOTOGRAPHY

Saturday, April 14; 7:30-10pm

*For details see page 16.*

### ART WORKSHOP

Mondays, April 30-June 18

9:30-11:30am

*For details visit arboretum.org.*

## HEALTH & WELLNESS

### FOREST BATHING

Saturday, April 21; 8-10am

*For details see page 11.*

### YOGA IN THE GARDEN

Tuesday evenings,

April 3, 10, 17, 24; 6-7:15pm

Thursday mornings,

April 5, 12, 29, 26; 9:30-10:45am

*For details visit arboretum.org.*

### TAI CHI

Thursdays, April 12, 19, 26, May 3

9-10:30am

*For details visit arboretum.org.*

## EVENTS

### NOVEL MEXICAN PLANTS FOR SOUTHERN CALIFORNIA Walking Tour

**Saturday, May 5, 11am**

*Included in admission; members free  
Guide: Frank McDonough*

On this walking tour of our Mexican collection, learn about trees and other plants that are well suited for Southern California.

### BALDWIN M. BALDWIN'S PAPERS

**Sunday, May 13, 1-2pm**

*Included in admission; members free  
Instructor: Mitchell Hearn Bishop  
For details see page 4.*

### GERANIUM SOCIETY SHOW & SALE

**Saturday & Sunday, May 12 & 13  
9am-4pm**

*Included in admission; members free*  
The International Geranium Society, Los Angeles branch, presents this wonderful annual display of geraniums.

### DESCANSO CHRYSANTHEMUM SPRING PLANT SALE

**Saturday & Sunday, May 19 & 22  
9am-4pm**

*Included in admission; members free*  
Over 150 varieties of rooted chrysanthemum cuttings will be available at the show as well as perennial flowers, shrubs and vegetable plants.

### ANNUAL EPIPHYLLUM SHOW & SALE

**Sunday, May 20; 9am-4pm**

*Included in admission; members free*  
Enjoy displays of these unusual and gorgeous flowers and learn all about the plants.

### QUEEN ANNE COTTAGE TOUR

**Sunday, May 20; 10am-3pm**

*For details see page 5.*

### SANTA ANITA BONSAI SHOW

**Saturday-Monday, May 26-28  
9am-5pm**

*Included in admission; members free*  
The Santa Anita Bonsai Society will present trees trained to look like miniature forest giants with trees up to four feet tall such as maples, junipers and pines will be on display.

## GARDENING

### TREE IDENTIFICATION

**Saturday, May 5; 10am-12pm**

*Instructor: Jerrold Turney  
\$25 members; \$35 non-members  
For details see page 16*

### CRESCENT FARM WORKSHOP Meadow Planting and Care

**Saturday, May 19; 10am**

*Included in admission; members free*  
Learn how to create a continuously flowering meadow using native and compatible flowers from seed.

### GREYWATER 101: GROW FRUIT WITH YOUR HOME BATH AND LAUNDRY WATER

**Saturday, May 26; 10-11am**

*Included in admission; members free*  
Presented by Greywater Action  
Greywater from sinks, showers and washing machines can be a great source for outdoor irrigation.

## KIDS & FAMILY

### BOOKWORMS: A STORYTELLING PROGRAM Up Close and Faraway:

**Seeing it all**

**Wednesdays, May 2 & 16**

**Saturday, May 12**

**Thursday, May 24**

**10:30am**

*Included in admission; members free  
For details see page 14.*

### FAMILY BIRD WALK

**Saturday, May 12; 8-10am**

*For details visit arboretum.org.*

## COOKING:

### FRESH: CELEBRATING THE TABLE

**Wednesday, May 9, 2018; 3-5pm**

*For details visit arboretum.org.*

### HANDS-ON STEAM CANNING: STRAWBERRY LEMON MARMALADE

**Saturday, May 12; 10am-12pm**

*\$30 members; \$40 non-members  
Instructor: Brie Wakeland*  
Learn how to safely make home-made strawberry lemon marmalade, using the affordable and efficient steam canning method.

## COLLECTIONS

### PLANT INFORMATION

**Wednesday, May 2; 1:30-3pm**

*For details visit arboretum.org.*

### READING THE WESTERN LANDSCAPE BOOK CLUB *Manual for Cleaning Women* by Lucia Berlin

**Wednesday, May 23; 7pm**

*For details visit arboretum.org.*

### SANTA ANITA DEPOT TOURS

**Tuesdays & Wednesdays**

**10am-4pm; Sundays, 1-4pm**

*For details visit arboretum.org.*

### DOCENT-LED WALKING TOURS

**Tuesday-Friday, 10am**

**Saturday, 10:30am**

*For details visit arboretum.org.*

## ART

### CHRISTMAS ORNAMENT WITH A REMOVABLE TOP

**Saturday, May 5; 1:30pm-3:00pm**

*Included in admission; members free*  
Demonstrator: Pete Carta  
See a piece of wood turned into a beautiful Christmas ornament that doubles as a small gift box.

### LIBRARY KNITTERS & MAKERS

**Friday, May 11; 6-8pm**

*For details visit arboretum.org.*

### BOTANICAL ART & ILLUSTRATION

**Tuesdays, May 1, 8, 15, 22**

**10am-2pm**

*For details visit arboretum.org.*

### NIGHT PHOTOGRAPHY

**Saturday, May 19; 7:30-10pm**

*For details see page 16.*

## HEALTH & WELLNESS

### FOREST BATHING

**Saturday, May 19; 8-10am**

*For details see page 11.*

### YOGA IN THE GARDEN

**Tuesday evenings,**

**May 1, 8, 15, 22, 29; 6-7:15pm**

**Thursday mornings,**

**May 3, 10, 17, 24, 31;**

**9:30-10:45am**

*Five classes: \$45 members;*

*\$55 non-members*

*For details visit arboretum.org.*

### TAI CHI

**Thursdays, May 10, 17, 24, 31**

**9-10:30am**

*For details visit arboretum.org.*





# JUNE AT THE ARBORETUM

## EVENTS

### DAYLILY SHOW & PLANT SALE

Saturday, June 2: 9am-4pm

Sunday, June 3: 9am-3pm

Included in admission; members free  
The Southern California Hemerocallis & Amaryllis Society sponsors this annual show that features educational displays and demonstrations.

### LOS ANGELES INTERNATIONAL FERN SOCIETY SHOW & SALE

Saturday & Sunday, June 9 & 10  
9am-5pm

Included in admission; members free  
Enjoy displays of ferns and other exotic plants at their finest. Informative lectures are scheduled for both days with opportunity drawings throughout each day.

### ARBORETUM SUMMER NIGHTS

Fridays, June 15 & 29

Details soon at [arboretum.org](http://arboretum.org).

### SAN GABRIEL VALLEY ORCHID HOBBYIST AUCTION

Thursday, June 21; 6-9:30pm

Free

For details see [arboretum.org](http://arboretum.org).

### PASADENA SYMPHONY & POPS

**That's Entertainment:  
Gershwin to Sondheim**

Saturday, June 23

5:30-10pm

For details see page 5 or [pasadenasympphony-pops.org](http://pasadenasympphony-pops.org).

## GARDENING

### CRESCENT FARM WORKSHOP

Preparing the landscape

for a hot summer

Saturday, June 16; 10am

Included in admission; members free  
Tour our choices for low water lawn alternatives for a drought-tolerant landscape for the heat and drought of summer.

## KIDS & FAMILY

### SUMMER CAMP

Weekly sessions begin June 4

For details see page 12.

### BOOKWORMS: A

**STORYTELLING PROGRAM**

Circles, Triangles, Hexagons and  
More: Shapes in Nature

Wednesdays, June 6 & 20

Saturday, June 16

Thursday, June 28

## TARZAN RETURNS

Saturday, June 30

10am-3pm

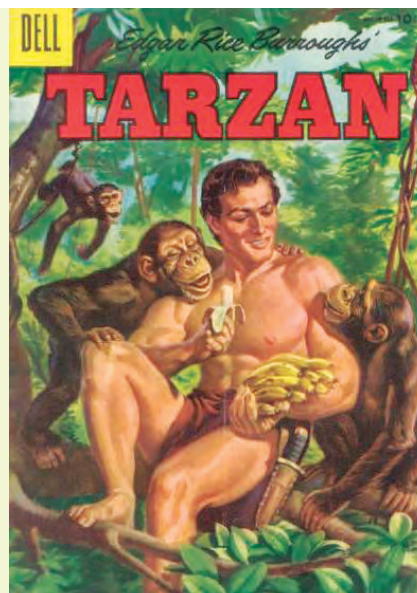
Included in admission;  
members free

We devote a day to Tarzan and movie making! Join us!

At 3pm there will be a special presentation,

**On Location: Tarzan at the Arboretum**, by Scott Tracy

Griffin. Fee for the talk is \$5 members; \$15 general public (includes admission).  
Details at [arboretum.org](http://arboretum.org).



10:30am

Included in admission; members free  
For details, see page 14.

### FAMILY BIRD WALK

Saturday, June 9; 8-10am

Guide: Katy Mann,  
Pasadena Audubon Society

For details visit [arboretum.org](http://arboretum.org).

## COLLECTIONS

### PLANT INFORMATION

Wednesday, June 6; 1:30-3pm

Included in admission; members free  
Instructor: Frank McDonough  
For details visit [arboretum.org](http://arboretum.org).

### READING THE WESTERN LANDSCAPE BOOK CLUB

**Not Without Laughter** by  
Langston Hughes

Wednesday, June 27; 7pm

Free

For details visit [arboretum.org](http://arboretum.org).

### SANTA ANITA DEPOT TOURS

Tuesdays & Wednesdays

10am-4pm

Sundays, 1-4pm

Included in admission; members free  
For details visit [arboretum.org](http://arboretum.org).

### DOCENT-LED WALKING TOURS

Tuesday-Friday, 10am

Saturday, 10:30am

Included in admission; members free  
For details visit [arboretum.org](http://arboretum.org).

## ART

### WOOD COLORING TECHNIQUES

Saturday, June 2; 1:30-3pm

Included in admission; members free

Demonstrator: Paul Dershem  
Benefits, restrictions and various wood color application techniques will be demonstrated and discussed.

### BOTANICAL ART & ILLUSTRATION

Tuesdays, June 5, 12, 29, 26

10am-2pm

\$275 members; \$295 non-members

Instructor: Cristina Baltayan

For details visit [arboretum.org](http://arboretum.org).

### LIBRARY KNITTERS & MAKERS

Friday, June 8; 6-8pm

Free

For details visit [arboretum.org](http://arboretum.org).

### NIGHT PHOTOGRAPHY

Saturday, June 16

7:30-10pm

\$30 members; \$40 non-members

Instructor: Frank McDonough

For details see page 16.

## HEALTH AND WELLNESS

### FOREST BATHING

Saturday, June 16

8-10am

\$25 members; \$35 non-members

For details see page 11.

### YOGA IN THE GARDEN

Tuesday evenings,

June 5, 12, 19, 26; 6-7:15pm

Thursday mornings,

June 7, 14, 21, 28; 9:30-10:45am

For details visit [arboretum.org](http://arboretum.org).

# Going *All In* for Historic Preservation

The Arboretum is grateful to everyone who supported the Lucky Baldwin Poker Tournament on June 10 in support of historic preservation. The event, held on the lawn of the Queen Anne Cottage, included cocktails, dinner, games, auction, entertainment and poker tournament.

Mario Lopez, from the *Extra* TV show, hosted the evening, and the Arboretum also thanks our Queen Anne Cottage Sponsor, Tiffany & Co. The event was a success thanks to the hard work of Tournament co-chairs, shown above—from left: Margaux Viera, Emily Rosedale-Kousoulis and Karen Snider Houghton with Mario.

## QUEEN ANNE COTTAGE

Tiffany & Co.

## COACH BARN

Santa Anita Park

## REID-BALDWIN ADOBE

City of Arcadia

## RANCHO SANTA ANITA

Parsons Corporation  
BBVA Compass  
Robert Willett  
Dolphin Event Services  
Peacock Café  
La Petite Fleur  
Bang & Olufsen



Denon Professional  
Casa Mexico

## EVENT HOST

Mario Lopez

## DONORS

Steve & Sandy Auer  
Mr. & Mrs. George Ball  
Katherine Ball  
Mr. Jacob Barga  
Mr. Robert Barnes  
& Ms. Deborah Klar  
Mr. & Mrs. Tom Beck  
Mr. Jeffrey Bellamy  
Mr. & Mrs. Art Bereuter  
Mr. Greg Blanchard  
Mr. Jason Booth  
Janet Braun  
Mr. & Mrs. George Brumder  
Carrie Burke & Matt Hylton  
Michelle Butler  
Annette Castro Ramirez  
& Julio Ramirez  
Mrs. Winnie Chan  
Mrs. Analia Cooper  
Cole Dalton & Caroline Carter

Mr. Kenny D'Aquila  
Jennifer deSpain  
Walter & Shelley Dominguez  
Blanche D'Souza  
Jordan Eiler & Carrie Eiler  
Adam Farahan  
Drew Flaherty  
Mr. & Mrs. Danford Foliart  
Scott Goldstein & Susan Tick  
Patrick Gorman  
Yvonne Green  
Gabriel & Janice Grimm  
Mr. George Hall  
Ms. Teresa Heim  
Freddi & Dr. Kenneth D. Hill  
Edwin Hodge  
Mr. & Mrs. Ernest Hoffer  
Sean Jackson  
Bret Jacobs  
Cleo Kades  
Kevin Kane & Sandy Snider  
Ms. Yelena Katchko  
Mrs. Midori Katsura Resler  
& Mr. Jeff Resler  
Kellogg Garden Products, Inc.  
Sandra Khalili  
Jennifer Klein  
Mr. & Mrs. Gary A. Kovacic  
Susan & Doug Kranwinkle  
Grace Lazenby  
Dominic Lazzaretto  
Mr. & Mrs. William Lincoln  
Yolanda McCreary  
Mrs. Jill Morganelli  
Ms. Victoria Bennett Murray  
Jill Narciso  
Mr. & Mrs. Byron Nelson



Colm Ofaolain  
Pasadena Symphony & POPS  
Mr. & Mrs. Steven Peralez  
Pumilia & Adamec, LLP  
Paul Raczkowski  
Kerri Rivas  
Shervin Roohparvar  
Tiffany Rosedale  
Mrs. Emily Rosedale-Kousoulis  
& Dr. Nick Kousoulis  
Sylvia & Paul Rosenberger  
Mr. Richard Schulhof  
& Ms. Sandra Goodenough  
Mrs. Karen Snider Houghton  
& Mr. Jim Houghton  
Janet Stephens  
Mr. & Mrs. James Tanner  
Nicole Tekiela  
Britney Thomas  
Mrs. Betsey Tyler  
Brad Vuong  
Mr. Edward Watson  
& Ms. Pamela Warner  
Susan Wei  
Carol Welsman  
Mr. Jay Whitcraft

## IN-KIND SUPPORTERS

Bacchus Kitchen  
Asa Kaftans Inc.  
B & K Electric Wholesale  
Bang & Olufsen  
Mr. & Mrs. Art Bereuter  
Casa Mexico Tequila  
Citrus Valley Health Foundation  
City of Arcadia  
Crossings  
David John & Rachel Kennedy  
Francis & Kathleen Mahoney  
Friends of Robinson Gardens  
Golden Boy Promotions  
Mr. George Hall  
John Moran Auctioneers  
La Petite Fleur  
Mt. Lowe Brewing Co.  
Museum of Neon Art  
New Stone Age Mosaic Studio  
Pasadena Symphony & POPS  
Perverse Sunglasses  
Mrs. Emily Rosedale-Kousoulis  
& Dr. Nick Kousoulis  
Royal Nomad Jewelry  
Singpoli Group  
Skin Care by Marlene Federico  
SoulCycle  
Suerte Tequila  
The Butcher's Daughter  
Mr. Edward Watson  
& Ms. Pamela Warner  
Hon. Robert Willett  
Wood Ranch Restaurant



## It All Started with Mom

LIKE MANY GARDENS, the Arboretum is a place where people honor loved ones and friends with a special tribute of a tree, bench or other memorial. In our Rose Garden, you may have noticed that the east arbor is dedicated to Miriam Albertson and the west arbor is named for Frederick Albertson. Symmetry is something their daughter Marcia Kay Radelet appreciates, being a collector of Victorian pieces, so it was only natural to have bookended arbors in tribute to her parents.

The family first honored Miriam's memory in the Rose

Garden she loved, and they continue to celebrate the lives of other loved ones with tributes located elsewhere in the Arboretum. For a family like the tight-knit Radelets, the memorials represent a deep and profound connection to the Arboretum.

"I always think about what I have and what I have had," said Marcia Kay, whose first husband Paul Halopoff died in a 1979 plane crash. "It's very sad, but you can be joyful and thankful for what has been given to us. Like with the Arboretum. That has come to us through my parents. I wonder if we would have taken advantage of the Arboretum were it not for my parents."

Miriam and Frederick Albertson, originally from Estherville, Iowa where Marcia Kay and her two sisters were raised, ultimately settled in Arcadia. Miriam enjoyed gardening and grew beautiful hydrangeas and roses. The couple visited the Arboretum frequently with their

grandchildren, Malissa and Tim Halopoff.

While it all started with Mom, Marcia Kay, her daughter Malissa Fairbrother, and Marcia's current husband of 29 years, Ron Radelet, have become very generous Arboretum Benefactors. Through the Arboretum Memorial & Tribute program, they dedicated a tree in honor of dear friend Dick Anderson, and another celebrating Marcia Kay's son Tim Halopoff, who passed away in 2015. A bench honors Les Fairbrother, Malissa's late husband who passed in 2014.

The family's commitment has deepened over time. "The thing I love about the Arboretum is it's a learning and growing garden," said Marcia Kay. "You are also expanding on what you have and adding things that are pertinent to our world. I want the Arboretum to carry on with its legacy."

With friends like the Radelets, the Arboretum will flourish for future generations.



## THANK YOU FOR A NIGHT TO REMEMBER

*Like the honorees Susan Kranwinkle and Peggy Rahn, the October 1 tribute to these ladies was all fun and laughter with entertainment by MUSE/IQUE, French cuisine and more. The event, in support of children's education, helped us meet a \$75,000 Challenge Grant from the Confidence Foundation.*

### CHILDREN'S CHAMPION \$10,000

Nancy & Michael Harahan

### Youth Education Advocate \$5,000

Anonymous  
Mary Blodgett & Carlton Calvin  
Bill Carrick & Beegie Truesdale  
Harvey & Ellen Knell Foundation  
Terri & Jerry Kohl  
Susan & Doug Kranwinkle  
Offsite IT  
Mr. Richard Schulhof  
& Ms. Sandra Goodenough  
Tom & Laney Techentin  
James R. Ukropina  
Bob Willett

### Field Science Sponsor \$2,500

Dana Baldwin  
Connie & Walter Ching  
Elizabeth & Stanislas Debreu  
Sue & Jim Femino  
Gale Kohl & Rene Chila  
Mark & Sara Kranwinkle  
Phaedra & Mark Ledbetter  
MonteCedro  
G. Arnold & Gretl Mulder  
Jane & Ron Olson  
Steven & Anita Perez  
Jane & David Pine  
Peggy Rahn  
Eileen White Read  
& Charles C. Read  
Tanabe, McMahon, Tanimoto &  
Farmer Group-Merrill Lynch  
Los Angeles  
Mrs. Betsey Tyler

### Kids Garden Guru \$1,000

Achieving America Family  
Foundation  
ACME Technologies  
Coleen & George Ball  
Ann & Olin Barrett  
Bill & Claire Bogaard  
Susan Chandler  
Remy L. Chatain, Jr. Foundation  
Carl & Lynn Cooper  
Peggy Dark  
Susan Delaney  
Dolphin Event Services  
Cheryl & Dan Foliart  
Bob & Kathy Gillespie  
HKG, LLP  
Freddi & Dr. Kenneth D. Hill  
Tracy Hirrel

Huntington Hospital  
Barbara & Frank Jameson  
Jeanie & Terry Kay  
Beverly C. Marksbury  
Judy & Steve McDonald  
Methodist Hospital  
Mary Anne & Lary Mielke  
Donivee & Merrill Nash  
Annette & Julio Ramirez  
Sharon & Nelson Rising  
Gregory Stone & Cindy Vail  
Tetra Tech

### DONORS

Mark Abernathy  
Dean & Margo Allen  
Mr. & Mrs. Edwin Andersen  
Jim Asperger  
& Christine Adams  
Mike & Carole Babcock  
Mr. & Mrs. Guilford C. Babcock  
Brett Barnard  
Mr. Robert Barnes  
& Ms. Deborah Klar  
Mr. & Mrs. William Bedford  
Mrs. Martyn Belmont  
Mr. & Mrs. James S. Bennett  
Mr. & Mrs. John F. Benson  
Carolyn Benson & Grace Edgar  
Mr. & Mrs. Thomas W. Bent  
Mrs. Christine C. Benter  
Mrs. Jill Berry  
Mr. & Mrs. Franklin O. Booth III  
Edwina Broderick  
Mr. & Mrs. George Brumder  
Paulette Burkitt &  
William Burkitt  
Mrs. William D. Burrows  
Dr. & Mrs. James C. Caillouette  
Ms. Julie Campoy  
Mr. & Mrs. Robert J. Cathcart  
Mrs. Catherine Cheney  
& Mr. Barry Jones  
Mr. & Mrs. John L. Cooper  
Margery Countzman  
Mrs. Gloria Cox  
Jean Crabtree  
Mitzi Cutler  
Cole Dalton & Caroline Carter  
Mr. & Mrs. Tim Delaney  
Dr. & Mrs. William Dietrick  
Leelee Clement Doughty  
Sarah Dusseault  
Mrs. Richard Econn  
Mr. & Mrs. Thomas E. Ellison, Jr.  
Mrs. Judith Epley  
Ms. Joan Fauvre  
Ms. Nancy Feldman  
& Mr. Damon Siples  
Ms. Patricia Fiedler  
James & Linda Foss  
Peter C. Foy  
Rose M. Frampton  
Haley & Anita Fromholz  
Jim & Peggy Galbraith  
Theodore Gardner  
Linda Gates Moore  
Mrs. George C. Good  
Mr. & Mrs. Richard A. Grant, Jr.  
Diane Grohulski  
Mr. & Mrs. Paul Grossman  
Linda W. Groth  
Mr. & Mrs. Manuel Hamme  
Kristin T. Harrison  
Mr. & Mrs. Rolf Hastrup



From left: Susan Kranwinkle, Richard Schulhof, Peggy Rahn

Mr. & Mrs. Carl L. Herrmann  
Mr. & Mrs. Gary Hoecker  
Mr. & Mrs. Schuyler  
Hollingsworth  
Mr. & Mrs. Richard Hotaling  
Dr. & Mrs. Ulf Israelsson  
Sandra Johnson  
Mireya Jones & Larry Jones  
Mr. Brian Kabateck & Mrs.  
Roxanne Hampton  
Mrs. Midori Katsura Resler &  
Mr. Jeff Resler  
Mr. & Mrs. H. Clay "Hap" Kellogg  
Amy & Jeff Knowles  
Ms. Gale Kohl & Mr. Rene Chila  
Mr. & Mrs. Russel I. Kully  
Mr. Bruce Lazenby  
Sharon Lewis  
Mr. & Mrs. William Lincoln  
Mr. & Mrs. Ken N. Lindgren  
Mr. Peter Lynch  
Ms. Dianne Magee  
Dr. & Mrs. Allen W. Mathies, Jr.  
Sandy Matranga  
Mr. & Mrs. David McCarthy  
Mr. & Mrs. William F. McDonald  
Ms. Sally J. McKenna  
Mr. Bob Mendoza  
Mr. & Mrs. Mitchell J. Milias  
Ms. Louisa N. Miller  
Ms. Sally H. Miller  
Erin B. Mills  
Mrs. Annamarie Mitchell  
Mrs. Carolyn P. Moss  
Dr. & Mrs. G. Arnold Mulder  
Mr. & Mrs. David Murphy  
Mr. & Mrs. Peter Murphy  
Andrea Nagata  
Mr. & Mrs. Robert E. Novell  
Ali O'Brien  
Artemis Onuma  
Mr. & Mrs. Dennis N. Page  
Mrs. Lynda Patton  
Ms. Sara Pelton  
Nick & Lillian Plati  
Judith Plunkett  
Mrs. Barbara Poer  
Mr. & Mrs. Laurence H. Pretty  
Shannon Quinn  
Marcia Kay Radelet & Malissa  
Fairbrother  
Mr. & Mrs. Kurt Rahn  
Ms. Christy Rakow  
Winnie Reitnouer  
Mrs. Emily Rosedale-Kousoulis  
& Dr. Nick Kousoulis  
Dr. & Mrs. Ken Sabbag  
Garet Sakamoto  
Ms. Eugenie Schlueter

Dr. & Mrs. Charles Seitz  
Nancy Smith  
Mrs. Karen Snider Houghton  
& Mr. Jim Houghton  
Mrs. Peggy Stewart  
Mr. Warren Techentin  
Catherine Thomas  
Gail S. Titus  
Mr. & Mrs. Paul Tosetti  
Ms. Danzey Treanor  
Dr. & Mrs. Mario Tse  
Sally Tyne  
Andrea Van de Kamp  
Mr. & Mrs. Scott Ward  
Mr. Edward Watson  
& Ms. Pamela Warner  
Ms. Cheryl Wegge  
Dr. & Mrs. Martin H.  
Weiss, M.D.  
Isabel Wells  
Karen Weseloh  
Mr. Jay Whitcraft  
Mr. & Mrs. Ian L.  
White-Thomson  
Mr. & Mrs. John P. Williams  
David & Marilyn Wooten  
Doug & Cara Yokomizo  
Harriet Zachary  
Natasha Zaharov  
William & Eileen Zimmerman

### IN-KIND SUPPORTERS

Malika Abbas & Abbas Ghulam  
Mr. Robert Barnes & Ms.  
Deborah Klar  
Connie & Walter Ching  
Dance Syndicate Entertainment  
Elizabeth & Stanislas Debreu  
Adam Delaney & Selena  
Donovan  
Susan Delaney  
Mr. Mark Hornish & Mrs.  
Alexandra Poer  
Jerry & Terri Kohl  
Gale Kohl & Rene Chila  
Susan & Doug Kranwinkle  
Mr. & Mrs. Mark Ledbetter  
Mt. Lowe Brewing Co.  
Dr. & Mrs. G. Arnold Mulder  
Panda Restaurant  
Mr. & Mrs. Charles Plowman III  
Peggy Rahn  
Annette & Julio Ramirez  
Renee's Garden Seeds  
Mr. Richard Schulhof & Ms.  
Sandra Goodenough  
Smith Brothers Restaurants  
Mrs. Betsey Tyler  
Vinotera Wine

# THANK YOU TO OUR SUPPORTERS

**Celebrating Arboretum Benefactors** The Arboretum Community is made up of many individuals who share a commitment to the vital role a garden plays as a place of learning, inspiration and enjoyment. We are grateful to our Arboretum Benefactors and celebrate their role as the organization's highest level of supporters. We are also proud to recognize our other special friends, members, foundations and corporations which made contributions between May 16 and October 31, 2017 at the \$100 level and above. Thank you to all our donors for your continuing support.

## **QUEEN ANNE COTTAGE BENEFACTORS \$25,000+**

Mr. & Mrs. Carl L. Herrmann  
Mrs. Betsey Tyler

## **ENGELMANN OAK BENEFACTORS \$10,000**

Megan Garrett  
& Christen Garrett  
Jeanie & Terry Kay  
Susan & Doug Kranwinkle  
Dr. & Mrs. Charles Seitz  
Mrs. Karen Snider Houghton  
& Mr. Jim Houghton  
Alyce & Warren Williamson

## **BALDWIN CIRCLE BENEFACTORS \$5,000**

Dr. Dana M. Baldwin  
Mr. & Mrs. George Ball  
Annette Castro Ramirez  
& Julio Ramirez  
Connie & Walter Ching  
Diane Grohulski  
Harvey & Ellen Knell  
Jerry & Terri Kohl  
Mr. & Mrs. William Lincoln  
Gilbert N. & Terese G. Resendez  
Hon. Robert Willett

## **TALLAC KNOLL BENEFACTORS \$3,000**

Mr. Robert Barnes & Ms.  
Deborah Klar  
Mr. & Mrs. Sean Cain  
Mrs. Elizabeth Debreu  
& Mr. Stanislas Debreu  
Leelee Clement Doughty  
Jim & Sue Femino  
Mr. & Mrs. Danford Foliart  
Freddi & Dr. Kenneth D. Hill  
Mrs. Midori Katsura Resler  
& Mr. Jeff Resler  
Mr. & Mrs. H. Clay "Hap" Kellogg  
Ms. Diana Leach  
Mark & Phaedra Ledbetter  
Marcia Kay Radelet  
& Malissa Fairbrother  
Peggy Rahn  
Mrs. Emily Rosedale-Kousoulis  
& Dr. Nick Kousoulis  
Mr. Richard Schulhof  
& Ms. Sandra Goodenough  
Dr. & Mrs. Mario Tse  
Mr. Edward Watson  
& Ms. Pamela Warner

## **MEADOWBROOK BENEFACTORS \$1,000**

Mr. & Mrs. Guilford C. Babcock  
Mr. & Mrs. Richard Barlow  
Mr. & Mrs. Robert E. Bell  
Ms. Deborah Beveridge  
Henry & Betty Botzbach  
Mrs. Hannah G. Bradley  
Mr. & Mrs. Simon Burrow  
Mrs. Carole Buss  
Mrs. Catherine Cheney  
& Mr. Barry Jones  
Mr. & Mrs. Mel Cohen  
Peggy Dark

Mrs. Jane Z. Delahanty  
Bonnie Dexter Gibson  
Ms. Cathy Gendron  
Mr. & Mrs. Robert W. Gillespie  
Ms. Erica Hahn  
Mr. & Mrs. Richard Hirrel  
Gale Kohl & Rene Chila  
Mr. & Mrs. Steven P. Mann  
Mr. & Mrs. Anthony McMahon  
Dr. & Mrs. G. Arnold Mulder  
Molly Munger  
& Stephen R. English  
Ms. Wendy Munger  
& Mr. Leonard Gumpert  
Mr. & Mrs. Merrill L. Nash  
Mrs. Louise Neiby  
Mr. & Mrs. Steven Peralez  
Charles & Eileen Read  
Susan Rzeppa Redpath  
Mr. & Mrs. David Rogers  
Sylvia & Paul Rosenberger  
Dr. Elaine Sarkaria  
& Ms. Amy Sarkaria  
Dr. Janice Sharp  
& Mr. Dane Hoiberg  
Mr. Vincent R. Talbot  
Mr. & Mrs. Thomas A. Techentin  
Dr. & Mrs. James Walters  
Mr. Nathan Watson  
& Mrs. Ying Qiao Hee  
Mrs. Maria Way  
Mr. & Mrs. Matt Weaver  
Ms. Marie Zimmerman  
& Mr. Jim Mohr

## **TULE POND BENEFACTORS \$500**

Anonymous  
Mrs. Elizabeth B. Ames  
Wayne Andlovec  
& Donna Campbell  
Ms. Suzanne Beatty  
Mr. & Mrs. James S. Bennett  
Mr. & Mrs. Craig Bonholtzer  
Janet Braun  
Mr. & Mrs. George Brumder  
Mr. & Mrs. Mark Charvat  
Mr. & Mrs. Richard Chavira  
Mr. & Mrs. Carl Cooper  
Ralph & Barbara Crane  
Sharyn Crown  
& Ms. Victoria Crown  
Mr. & Mrs. Bryant C. Danner  
Mr. & Mrs. Edward de Beixedon  
Dr. John Doyle & Dr. Marie Csete  
Mr. & Mrs. Joseph S. Eisele  
Dr. Lincoln Fairchild  
Ms. Marilyn Filbeck  
Mrs. George C. Good  
Mrs. Douglas Goodan  
Mr. & Mrs. Frank Griffith  
Mr. Burks Hamner  
Sally L. Harris  
Mr. & Mrs. David Hensley  
Mr. & Mrs. Patrick Holland  
Mr. & Ms. Curt Jacobsen  
Ed & Susan Johnson  
Mr. & Mrs. Larry Kaiser  
Mr. Edward Kleinbard  
& Ms. Norma Cirincione  
Mr. & Mrs. Russel I. Kully

Dr. Edward Lax  
Mr. & Mrs. Ken N. Lindgren  
Ms. Diane Marcussen  
& Mr. David Kristoff  
Mr. & Mrs. William F. McDonald  
Mr. & Mrs. Jim Meagher  
Ms. Joan Michael  
Mr. Gerald W. Miller  
Erin B. Mills  
Mr. Robert Muse  
& Ms. Diana Selland  
Mr. Stuart Nowinski  
Mrs. Joan Oakes  
Lorraine Ow & Vincent Chan  
Ms. Janet Rea  
& Dr. Edward Mittleman  
Mrs. Suzanne Rheinstein  
Lorraine & Ted Richter  
Dean & Jean Rosenberger  
Leticia Sanchez  
Mrs. Terry Seidler  
Sandy Snider & Kevin Kane  
Dr. Jonathan Spanier  
Michael & Peggy Stahlheber  
Mrs. Peggy Stewart  
Mr. Greg Stone & Ms. Cindy Vail  
Ms. Victoria Stratman  
& Mr. Ron Stratman  
Mr. Michael Strickling  
Dr. & Mrs. Robert Tager  
Mr. & Mrs. L. Sherman Telleen  
Ms. Danzey Treanor  
Mr. Jake Trieu  
& Mrs. Mandy Huang  
Mrs. Christine Wei  
& Mr. Jeff Chen  
Ian & Barbara White-Thomson  
Bonnie Youngdahl

## **DONOR LIST**

### **\$75,000+**

Confidence Foundation

### **\$50,000+**

The Rose Hills Foundation

### **\$25,000+**

Wells Fargo Foundation

### **\$10,000+**

Rockler Companies Incorporated

### **\$2,500+**

Arlene C. Bell  
Kellogg Garden Products, Inc.  
Pasadena Garden Club

### **\$1,000+**

Santa Anita Park  
Arcadia Chamber of Commerce

### **\$500+**

Arboretum District of California  
Garden Club, Inc.  
Mr. Rhett D. Beavers

### **\$250+**

Ms. Rayma Harrison  
Mr. & Mrs. Gerald Chuck  
The Community Foundation  
of Utah

Mr. & Mrs. David Huang  
Mrs. Judy Lee & Mrs. Lin Ho Lee

### **\$100+**

Mr. & Mrs. Marshall Bissett  
Mr. & Mrs. Larry Callahan  
Ms. Hsiao Chang  
Ms. Carol E. Cuthbertson  
Mr. & Mrs. William S. Davila  
Sybil A. Davis  
Mr. Don Fandry  
Ms. Nadine Felix  
Mr. Domenic Ferrante  
Mr. & Mrs. David Flores  
Ms. & Mrs. Gail Gerbode  
Mr. & Mrs. Bob Goodwin  
Mr. Bob Graves  
Mr. Hong Ho & Dr. Jessica Chen  
Mrs. Dorothy C. Hoffman  
Dr. & Mrs. Jeremy B. Jones  
Joanne & Donald Kay  
Thomas & Justina Lee  
Dr. & Mrs. Allan Y. Lee  
Ms. Rosie O. Lizcano  
Mrs. Harriett Lyle  
Mr. & Mrs. Murray B. Marsh  
Mr. & Mrs. David R. Mast  
Ms. Maryon Matsuda  
Ms. Kathleen McCauley  
Mr. & Mrs. Charles Miller  
Mrs. Gail Montury  
Mr. & Mrs. Dennis Murphy  
Mr. & Mrs. Art Narevsky  
Mrs. Kathryn Novak  
& Ms. Martha Hoffman  
Mrs. Carol O'Toole  
Dr. & Mrs. Garrett Paine  
Mrs. Harriet Plunkett  
Mrs. Doris M. Popoff  
Ms. Jean Prinz  
Richard W. Shaffer  
Mr. & Mrs. John Sheehan  
Dr. & Dr. Steven Teutsch  
Mr. & Mrs. Charles Thornton, Jr.  
Ms. Elizabeth Troy  
& Mr. Ken Broder  
Mr. & Mrs. Tom Walker  
Ms. Odile Wann  
Mr. & Mrs. Robert Weber  
Mrs. Karen Whitehill  
Ms. Patricia Wilmot

## **GARDEN SPONSOR MEMBERS**

Mr. & Mrs. Richard Diaz  
Mr. & Mrs. Edward W. Engs III  
Mr. & Mrs. John V. Hallstrom  
Mr. & Mrs. Gary Hoecker  
Dr. & Mrs. Jeremy B. Jones  
Ms. Susan D. Martynec  
Mr. Bob Mendoza  
Mrs. Jean Rowe & Mrs. Debbie  
Bishoff  
Mr. & Mrs. Jamie Stephens  
Mr. & Mrs. Ken Twomey

## **IN-KIND**

Ms. Leigh Adams  
Dr. Joseph Barbaccia  
Botanico de Torreyes Estacion  
Biologica-Jardin



Jim Brewer  
 Sara Campos  
 Rick Cirino  
 Mr. & Mrs. Patrick Craig  
 Peter Del Tredici  
 Diana Donnellan  
 Mr. & Mrs. Daniel Flaming  
 Mr. & Mrs. Michael Geva  
 Keani Goar  
 Madhu Goodman  
 Ken Greby  
 Ms. Rayma Harrison  
 James E. Henrich  
 Donald R. Hodel  
 The Holden Arboretum  
 Heather & Michael Holden  
 Huntington Botanical Gardens  
 Jordi Botanic de Barcelona  
 Jardim Botanico da Madeira  
 Jardim Botanico de Lisboa  
 Jardim Botanico Canario  
 "Viera y Clavijo"  
 Jardin Botanico de Castilla-La Mancha  
 Jardin Botanico de La Rioja  
 Jardin Botanico de Olarizu  
 Jardin Botanico-Historico La Concepcion de Malaga  
 Jardin Botanico Universitario de Sierra Nevada (Granada)  
 Jungle Jack's  
 Dave Karp  
 Mr. & Mrs. Bradford D. King, Jr.  
 Julie Lannom - Estate of David Lannom  
 Dr. Robert Lupinacci - Estate of Dr. Gordon R. Dyer  
 Ms. Darlene Mantecon  
 Nancy Mauth  
 Mr. & Mrs. Emmett McGuire  
 Waltraud Milani  
 Mt. Lowe Brewing Co.  
 Nuccio's Nursery  
 Mr. & Mrs. Lou Orr  
 Ou Rick Te  
 Pasqual Mara Estate  
 Plants for the Southwest/Living Stones Nursery  
 Jim Pontello  
 Real Jardin Botanico de Madrid  
 Real Jardin Botanico Juan Carlos I, Universidad de Alcala  
 Mr. Thomas A. Revak  
 Mr. & Mrs. Steve Robinson  
 Jeff Shaw  
 Ron & Joan Stolba  
 Taiwan Forestry Research Institute  
 Scott Tracy Griffin  
 Roy Wiersma

#### HONORARIA & MEMORIALS

##### IN MEMORY OF ARLEN W. BELL INCLUDING MEMORIAL TREE

Arlene Bell  
Diana Kinsella

##### IN MEMORY OF JAMES BROWNFIELD

Ms. Shake Mamigonian

##### IN MEMORY OF TIM CONROW

Charles Beichman  
Mr. & Mrs. Richard Benson  
Mr. & Mrs. John L. Carlton

Ms. Brittany Fabeck  
Sylvia & Paul Rosenberger

##### IN MEMORY OF DR. GORDON R. DYER

Bruce Dyer  
Ms. Colleen Kelly

##### IN MEMORY OF LOUISE GELBER INCLUDING MEMORIAL TREE

Ginger Gelber  
Julie McCoy

##### IN HONOR OF MARTHA ROSETT INCLUDING TREE DEDICATION

Liz Thomas

##### IN MEMORY OF DR. DAVID A. GOLDSTEIN INCLUDING MEMORIAL TREE

Goldstein Family

##### IN MEMORY OF JASON ILHARREGUY INCLUDING MEMORIAL TREE

Cynthia Rodriguez  
Ilharreguy Family  
Holland Chiropractic

##### IN MEMORY OF JOHN SKOV KRISTENSEN

Disney In Home Creative

##### IN MEMORY OF AL LOPEZ

Mrs. Eleanor Andrews

##### IN MEMORY OF PIQUI INCLUDING MEMORIAL TREE

Meredith Adams  
Denisse Adué  
Mr. David Choe  
Lori Davis Denny  
Ana Estevez  
Kirstie Field  
Grace Fuller  
Bernadette Gillespie  
Green Brooms Music Academy  
Ann Ogawa  
Molly Sakahara  
Heidi Sampson

##### IN MEMORY OF JIM POTTER

Mr. & Mrs. Don Eifert

##### IN HONOR OF WILLIAM H.H. & RUTH REEDER INCLUDING BENCH DEDICATION

Reeder Family

##### IN MEMORY OF SWEET PEA

Patti Teale

##### IN MEMORY OF INEKO YOKOSHIMA UYENO

Global Blood Therapeutics

##### IN HONOR OF NORMAN WIGGLESWORTH

AHS Class of '51  
Reunion Committee

.....  
Please call the Development Office at 626.821.3237 if we inadvertently misspelled or omitted your name.

## GIFT MEMBERSHIPS

### Share the beauty of the garden and give the gift of an Arboretum membership!

An Arboretum membership makes the perfect gift—friends, family and loved ones will enjoy benefits year-round when they receive your gift of membership. Your gift is even more meaningful because it helps to support the Arboretum's educational programs and to maintain the beauty of the garden. Arboretum memberships also make great client, office and teacher gifts! To order gift memberships, call 626.821.3233 or visit [arboretum.org](http://arboretum.org).

## MEMBERSHIP CATEGORIES

☐ NEW ☐ RENEWAL/ I.D.# \_\_\_\_\_ ☐ GIFT

☐ \$50 Student/Teacher  
(admits 1 adult)

☐ \$60 Individual  
(admits 1 adult)

☐ \$55 Senior(s)  
(admits 2 seniors 62 and older)

☐ \$85 Family  
(admits two adults & children under 18)

☐ \$175 Garden Sustainer  
(admits 2 adults and children or grandchildren under 18)

- Admission for two additional guests when accompanied by member
- Two portrait photography fees waived (a \$100 value)

☐ \$325 Garden Sponsor  
(admits two adults plus two guests and children under 18)

- Two one-day guest passes
- Recognition in the Arboretum Members Magazine
- Complimentary Arboretum gift

For information on Benefactor memberships, please call 626.821.3237.

#### PLEASE PRINT

First Member Name (Mr./Mrs./Ms./Dr.):

\_\_\_\_\_

Second Member Name (Mr./Mrs./Ms./Dr.):

\_\_\_\_\_

Address:

\_\_\_\_\_

City, State and Zip:

\_\_\_\_\_

Telephone: \_\_\_\_\_

E-mail Address: \_\_\_\_\_

\_\_\_\_\_ #Check payable to Los Angeles Arboretum Foundation (LAAF)

☐ Visa ☐ MasterCard ☐ Discover ☐ Amex

Credit Card#: \_\_\_\_\_

Exp. Date: \_\_\_\_\_/\_\_\_\_\_ CVV: \_\_\_\_\_

Signature \_\_\_\_\_

VISIT [ARBORETUM.ORG](http://ARBORETUM.ORG) FOR A LISTING OF THE LATEST NEWS AND EVENTS AT THE ARBORETUM.

## Giving teachers 24/7 access to book tours



WHEN VOLUNTEER Terri Mando became School Docent Co-Chair in 2013, the Arboretum was using a manual system of call-in reservations and handwritten notes to manage its monthly school tour schedule.

Today, teachers can access an online system 24/7 to book tours for their students thanks to Terri, who utilized her 20+ years in computer support, automation, process improvement, and project management to develop a program for the Arboretum.

Because of her hard work and that of so many other volunteers, a record number of students visited the Arboretum during the 2016-2017 school year, according to Chris Orosz, School and Youth Programs Manager.

"It is great working with Terri! She is a problem solver at heart and loves a challenge which are only two of the many reasons she is so valued here. We have been so privileged to have Terri volunteer with us and we look forward to having her continue the progress of our mission."

### GET INVOLVED

Volunteers provide hospitality, information and support staff in all areas of the garden. For more information about becoming a volunteer, **contact Nancy Carlton** at 626.821.3210 or [nancy.carlton@arboretum.org](mailto:nancy.carlton@arboretum.org).

### BECOME A DOCENT

No experience necessary—just enthusiasm for plants, history and an eagerness to learn and share the knowledge. Docents are needed to lead both adult and school tours. As a docent, you will spend time learning about the Arboretum's collections and local California history. Becoming a docent is a great way to meet new friends and become an integral part of the garden.

### GETTING HERE

The Arboretum is located in the city of Arcadia, just 2 miles east of Pasadena. Exit off the 210 Freeway on Baldwin Avenue and travel south. Or take the Gold Line ([metro.net](http://metro.net)) to Arcadia where you'll find a shuttle to the Arboretum. If you bike, racks are available at the Arboretum parking lot. Parking is free. Handicapped parking is available.

### PEACOCK CAFE

**Tuesday-Sunday; 9am-4:30pm**

The Fresh Gourmet staffs the Peacock Café and offers a varied selection of gourmet sandwiches, wraps, salads and special items from the grill. No picnics are allowed on the Arboretum grounds, but picnic tables are available outside the main entrance.

**For large parties and catering, call 626.446.2248.**

### HOURS AND ADMISSION

**Open daily 9am-4:30pm**

(Members enter at 8am)

**\$9 General Admission; Members Free**

**\$6 Seniors, Full-time students**

**\$4 Children 5-12**

